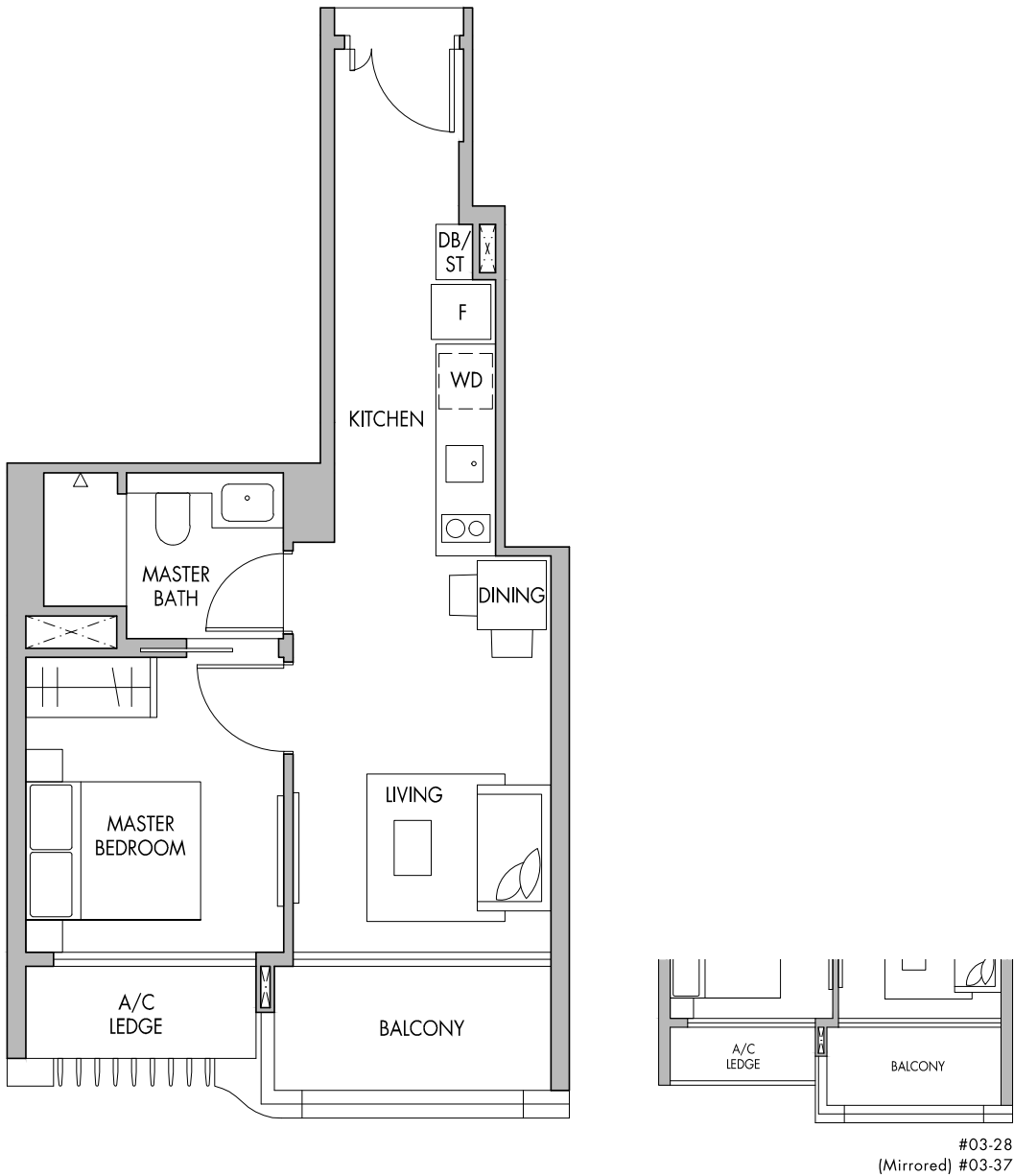


1-Bedroom

TYPE A3

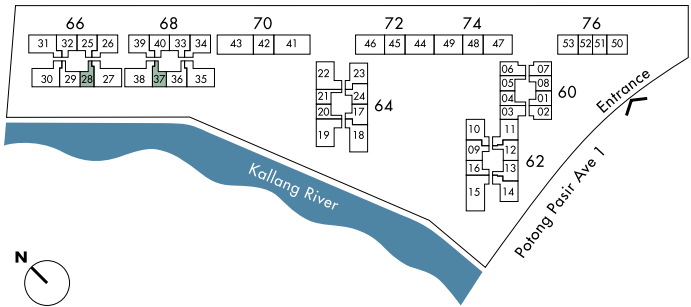
TOWER BLOCK



**Block 66**  
#03-28  
#04-28 to #20-28

**Block 68**  
#03-37 (Mirrored)  
#04-37 to #20-37 (Mirrored)

46 sq.m. | 495 sq.ft.

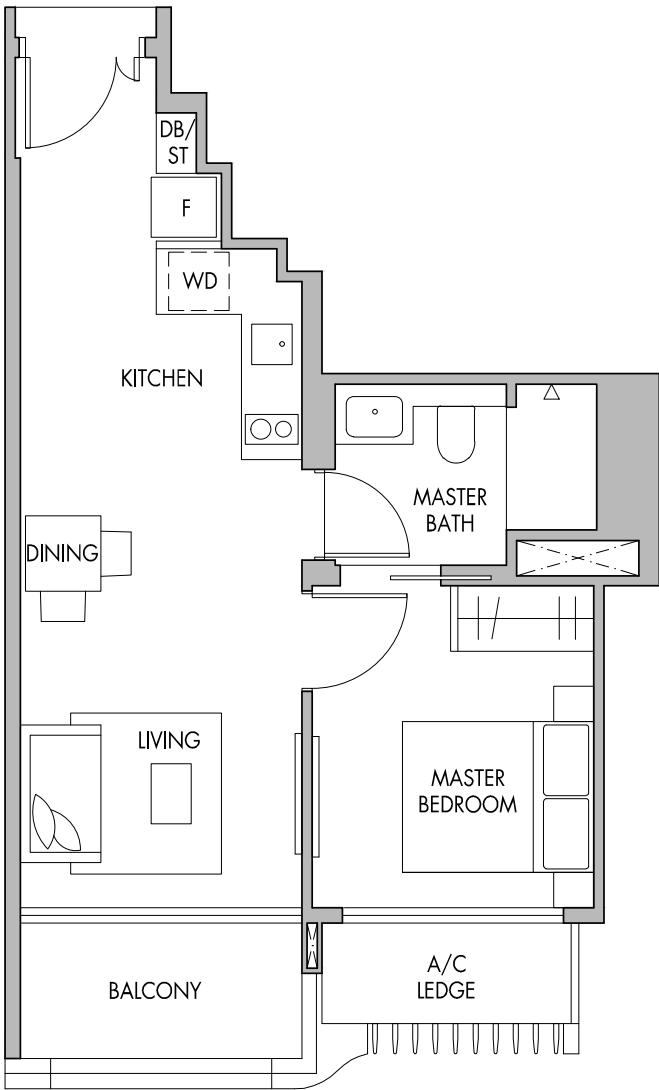


Area includes A/C ledge, balconies and void (if applicable). The above plans and illustrations are subject to changes as may be required by the relevant authorities. Areas are estimates only and are subject to final survey. The balcony shall not be enclosed unless with the approved screen. For an illustration of the approved balcony screen, please refer to the diagram annexed hereto as 'Annexure 1'.

1-Bedroom

TYPE A4

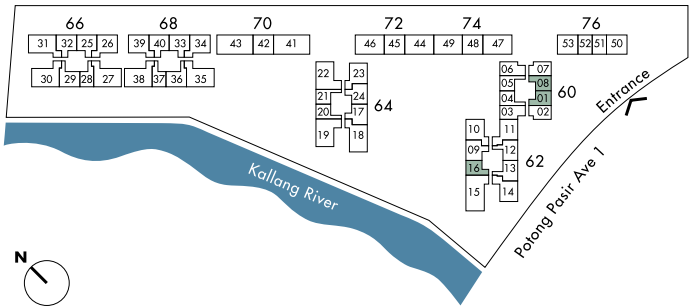
TOWER BLOCK



**Block 60**  
#04-01 to #19-01  
(Mirrored) #04-08 to #19-08

**Block 62**  
(Mirrored) #04-16 to #19-16

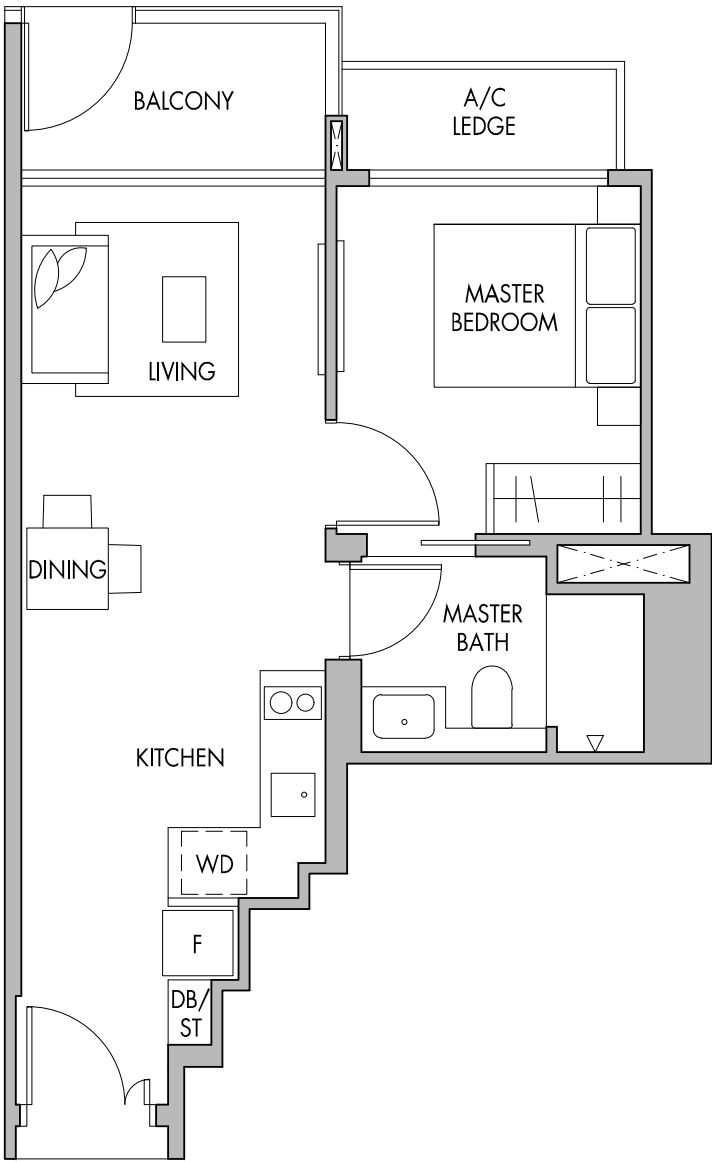
47sq.m. | 506 sq.ft.



Area includes A/C ledge, balconies and void (if applicable). The above plans and illustrations are subject to changes as may be required by the relevant authorities. Areas are estimates only and are subject to final survey. The balcony shall not be enclosed unless with the approved screen. For an illustration of the approved balcony screen, please refer to the diagram annexed hereto as 'Annexure 1'.

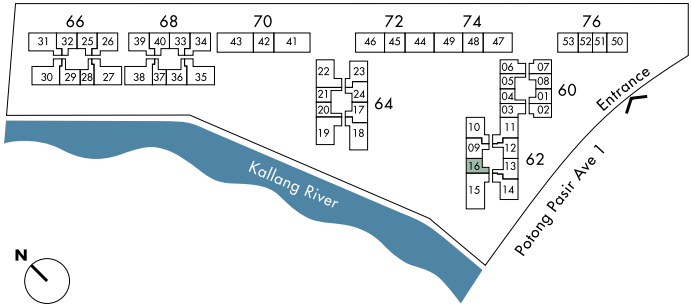
# 1-Bedroom

TYPE A4P



**Block 62**  
#03-16

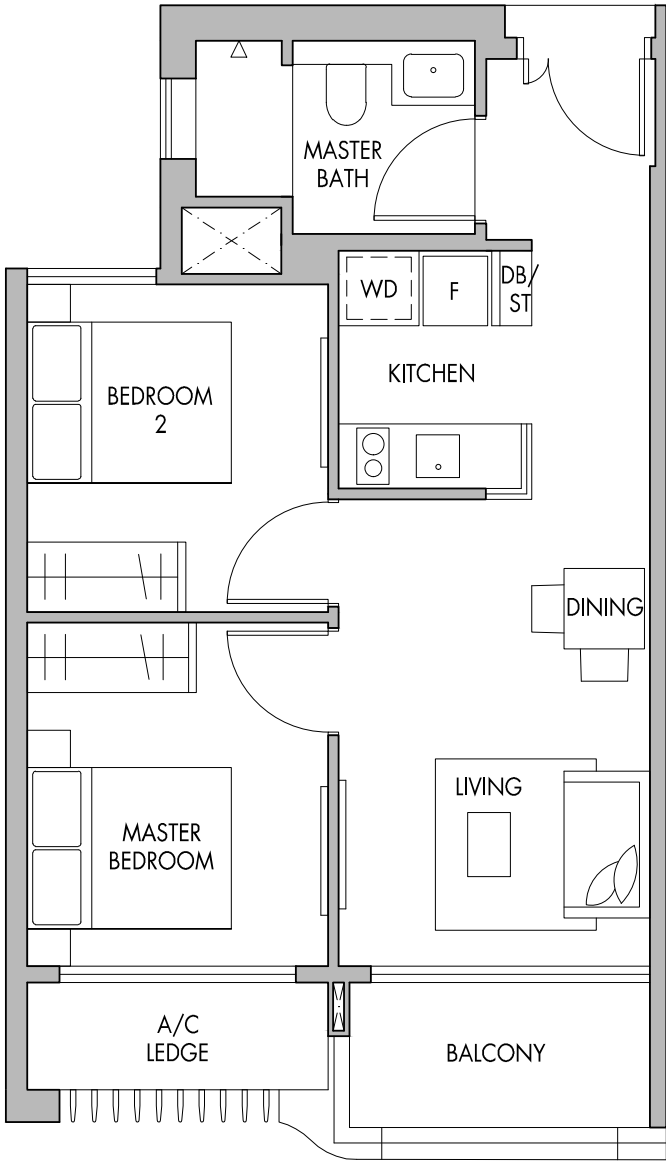
47sq.m. | 506 sq.ft.



Area includes A/C ledge, balconies and void (if applicable). The above plans and illustrations are subject to changes as may be required by the relevant authorities. Areas are estimates only and are subject to final survey. The balcony shall not be enclosed unless with the approved screen. For an illustration of the approved balcony screen, please refer to the diagram annexed hereto as 'Annexure 1'.

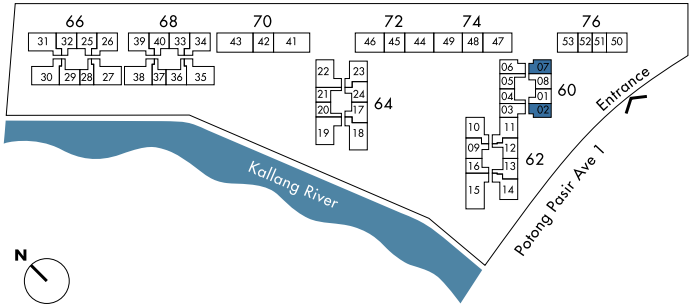
# 2-Bedroom

TYPE B1



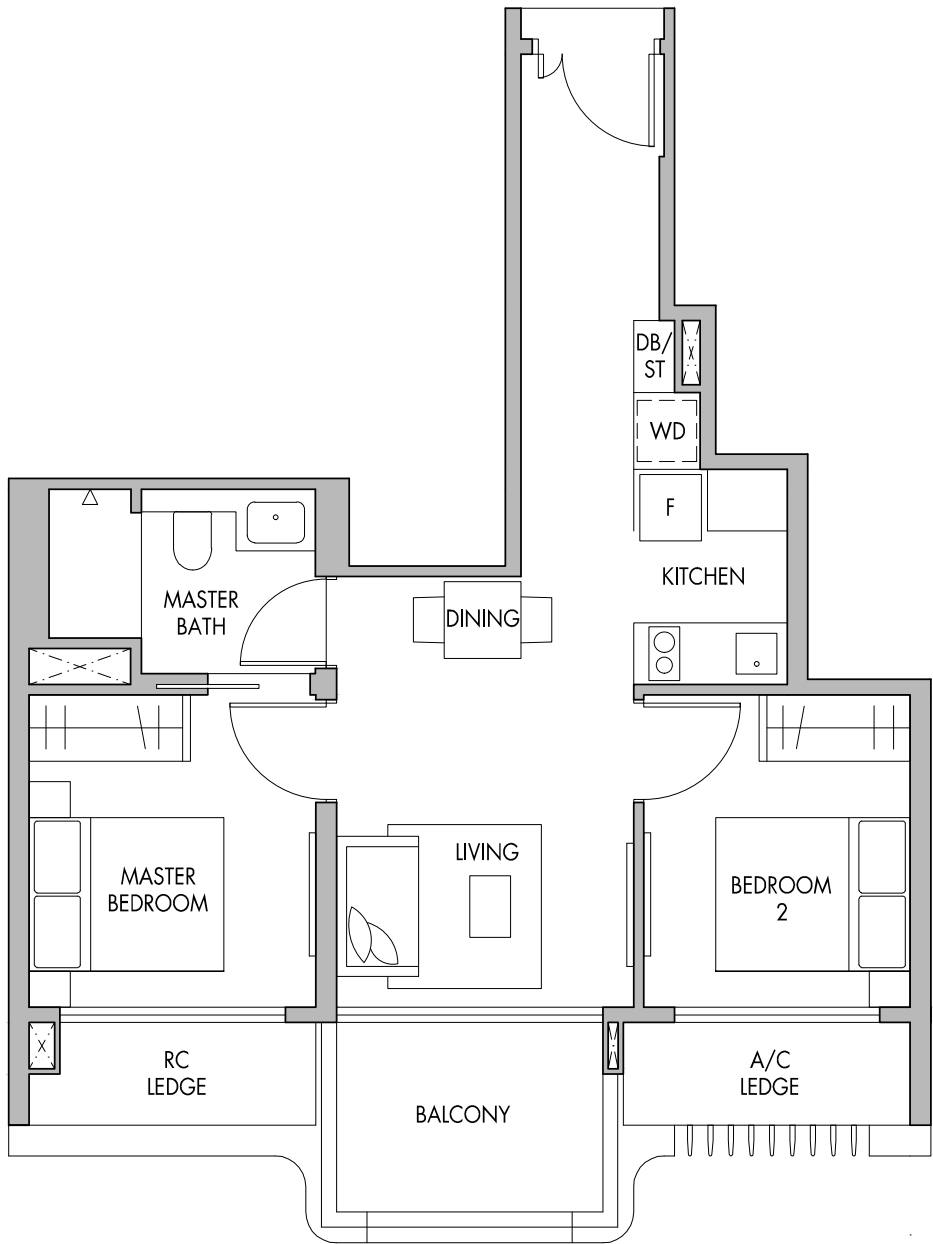
**Block 60**  
#04-02 to #19-02  
(Mirrored) #04-07 to #19-07

57 sq.m. | 614 sq.ft.



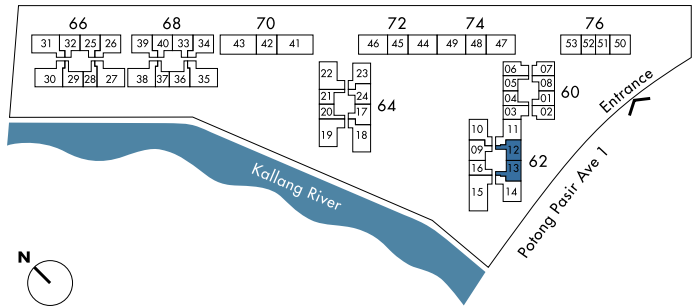
Area includes A/C ledge, balconies and void (if applicable). The above plans and illustrations are subject to changes as may be required by the relevant authorities. Areas are estimates only and are subject to final survey. The balcony shall not be enclosed unless with the approved screen. For an illustration of the approved balcony screen, please refer to the diagram annexed hereto as 'Annexure 1'.

# 2-Bedroom TYPE B2



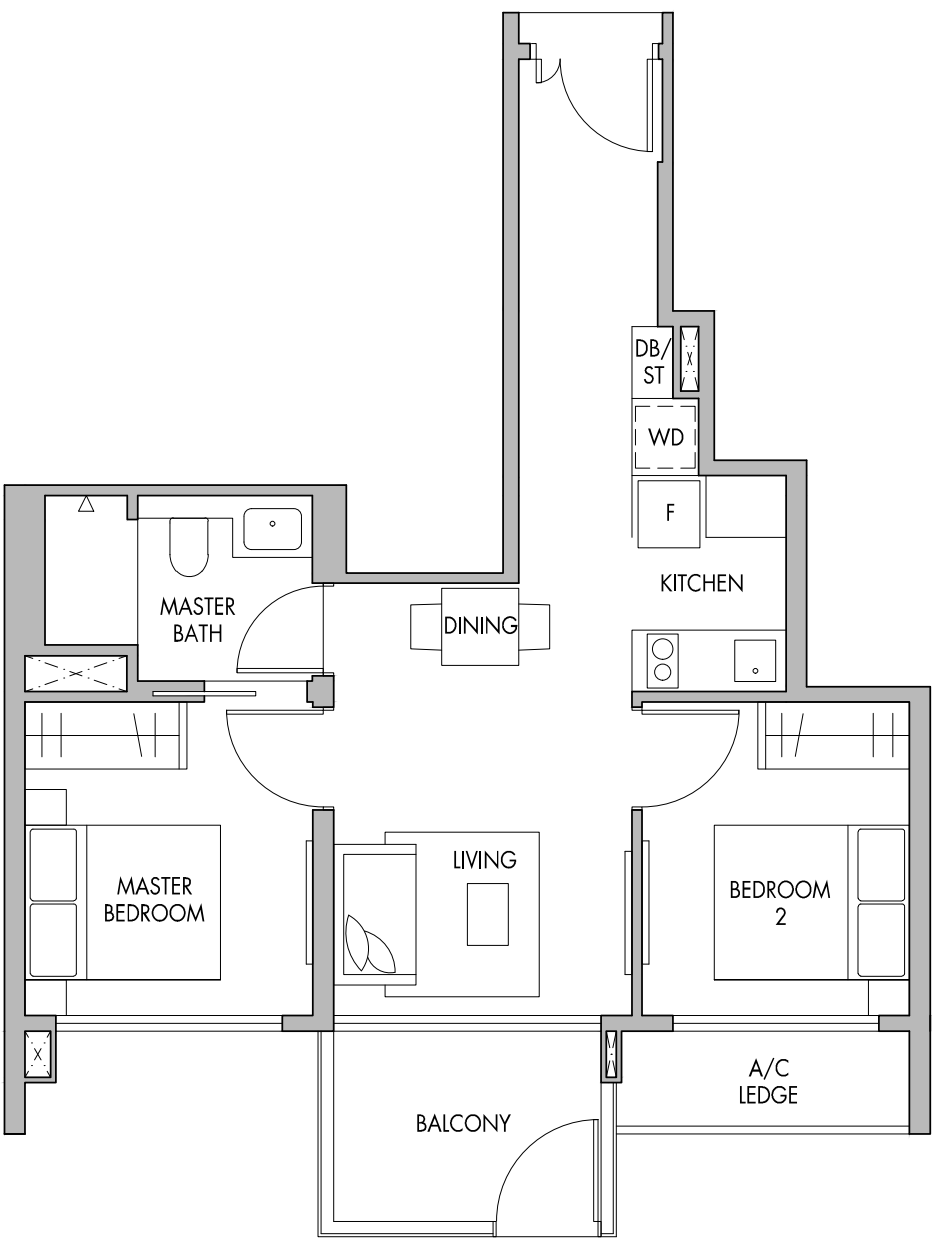
**Block 62**  
 #04-12 to #07-12  
 #10-12 to #19-12  
 #04-13 to #19-13 (Mirrored)

58 sq.m. | 624 sq.ft.



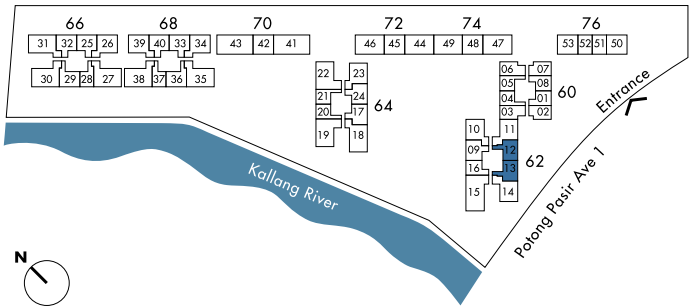
Area includes A/C ledge, balconies and void (if applicable). The above plans and illustrations are subject to changes as may be required by the relevant authorities. Areas are estimates only and are subject to final survey. The balcony shall not be enclosed unless with the approved screen. For an illustration of the approved balcony screen, please refer to the diagram annexed hereto as 'Annexure 1'.

# 2-Bedroom TYPE B2P



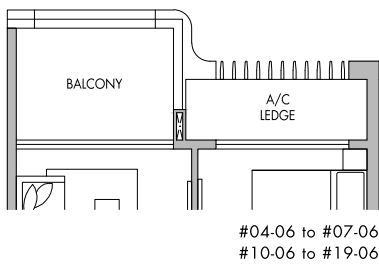
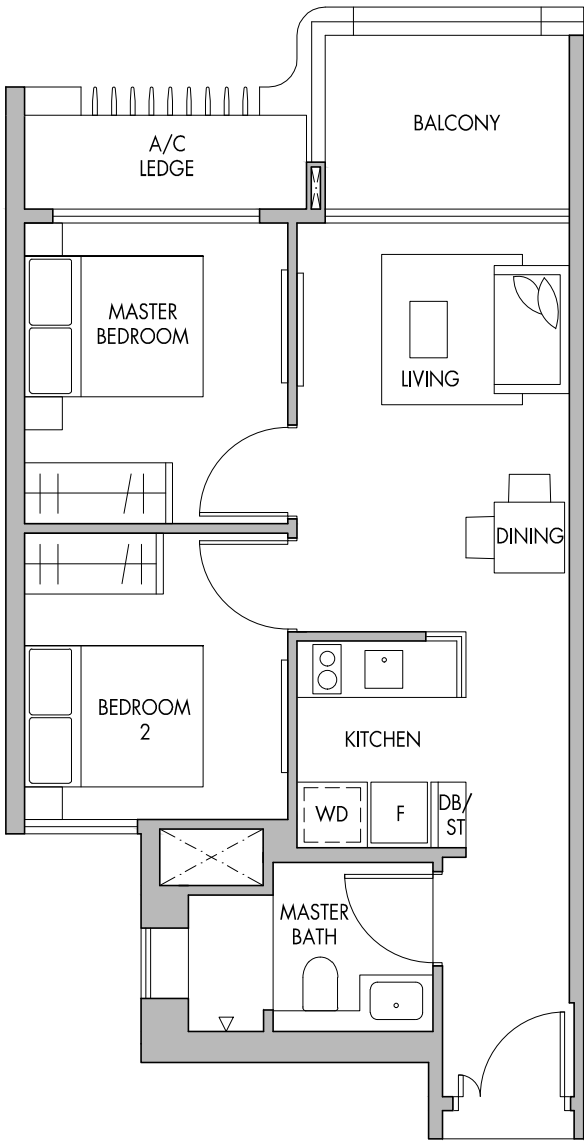
**Block 62**  
 #03-12  
 (Mirrored) #03-13

58 sq.m. | 624 sq.ft.

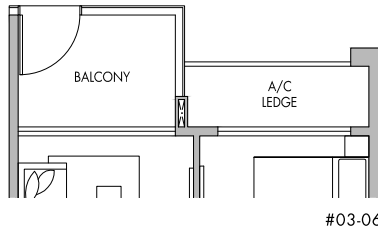
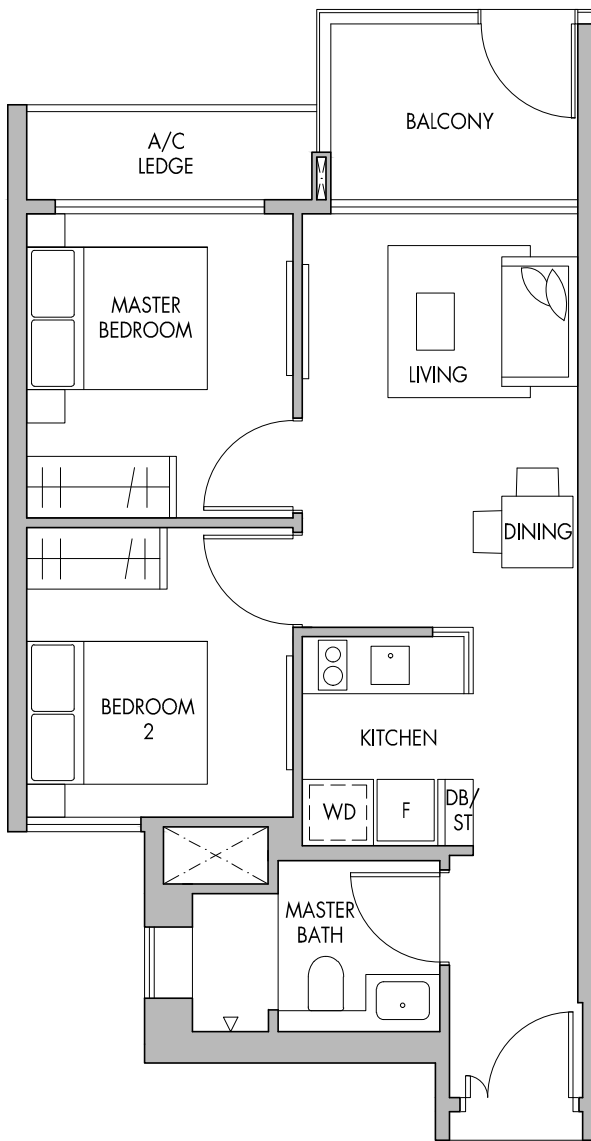


Area includes A/C ledge, balconies and void (if applicable). The above plans and illustrations are subject to changes as may be required by the relevant authorities. Areas are estimates only and are subject to final survey. The balcony shall not be enclosed unless with the approved screen. For an illustration of the approved balcony screen, please refer to the diagram annexed hereto as 'Annexure 1'.

2-Bedroom  
TYPE B3

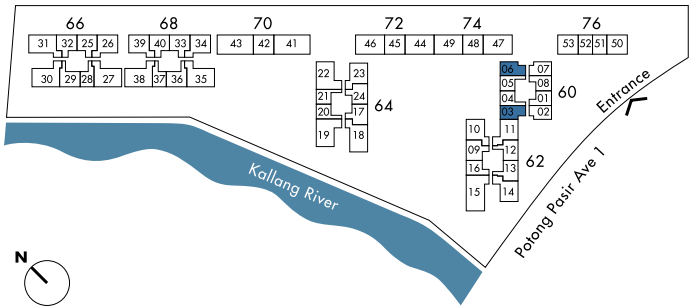


2-Bedroom  
TYPE B3P



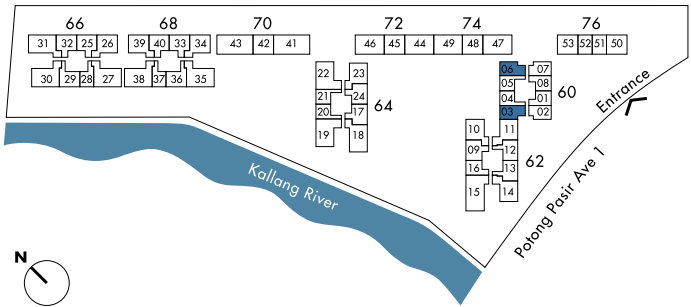
**Block 60**  
#04-03 to #07-03  
#10-03 to #19-03  
#04-06 to #07-06  
#10-06 to #19-06

60 sq.m. | 646 sq.ft.



**Block 60**  
#03-03  
#03-06

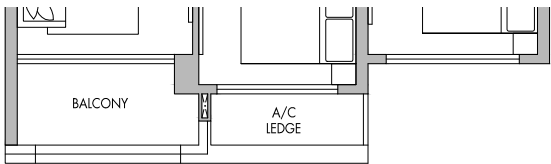
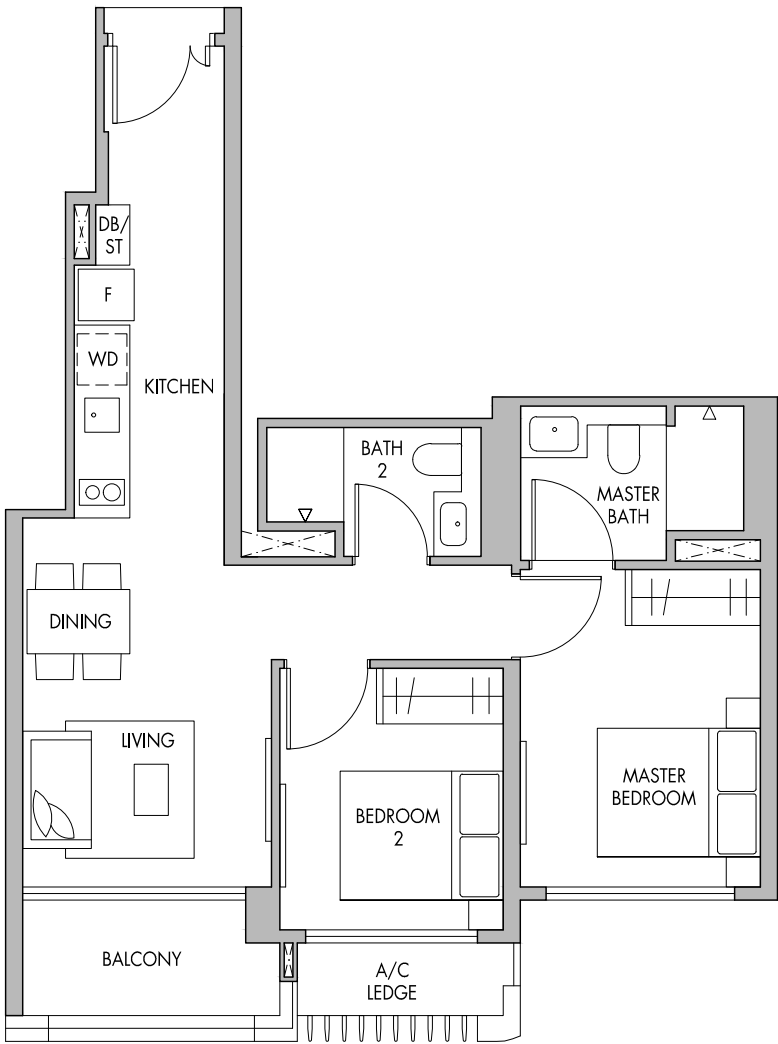
60 sq.m. | 646 sq.ft.



Area includes A/C ledge, balconies and void (if applicable). The above plans and illustrations are subject to changes as may be required by the relevant authorities. Areas are estimates only and are subject to final survey. The balcony shall not be enclosed unless with the approved screen. For an illustration of the approved balcony screen, please refer to the diagram annexed hereto as 'Annexure 1'.

Area includes A/C ledge, balconies and void (if applicable). The above plans and illustrations are subject to changes as may be required by the relevant authorities. Areas are estimates only and are subject to final survey. The balcony shall not be enclosed unless with the approved screen. For an illustration of the approved balcony screen, please refer to the diagram annexed hereto as 'Annexure 1'.

2-Bedroom Premium  
TYPE B5

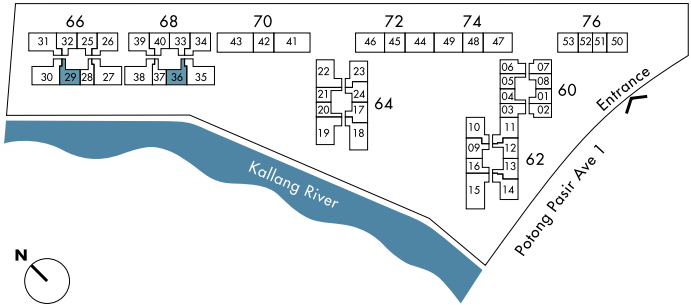


#03-29  
(Mirrored) #03-36

**Block 66**  
#03-29  
#04-29 to #20-29

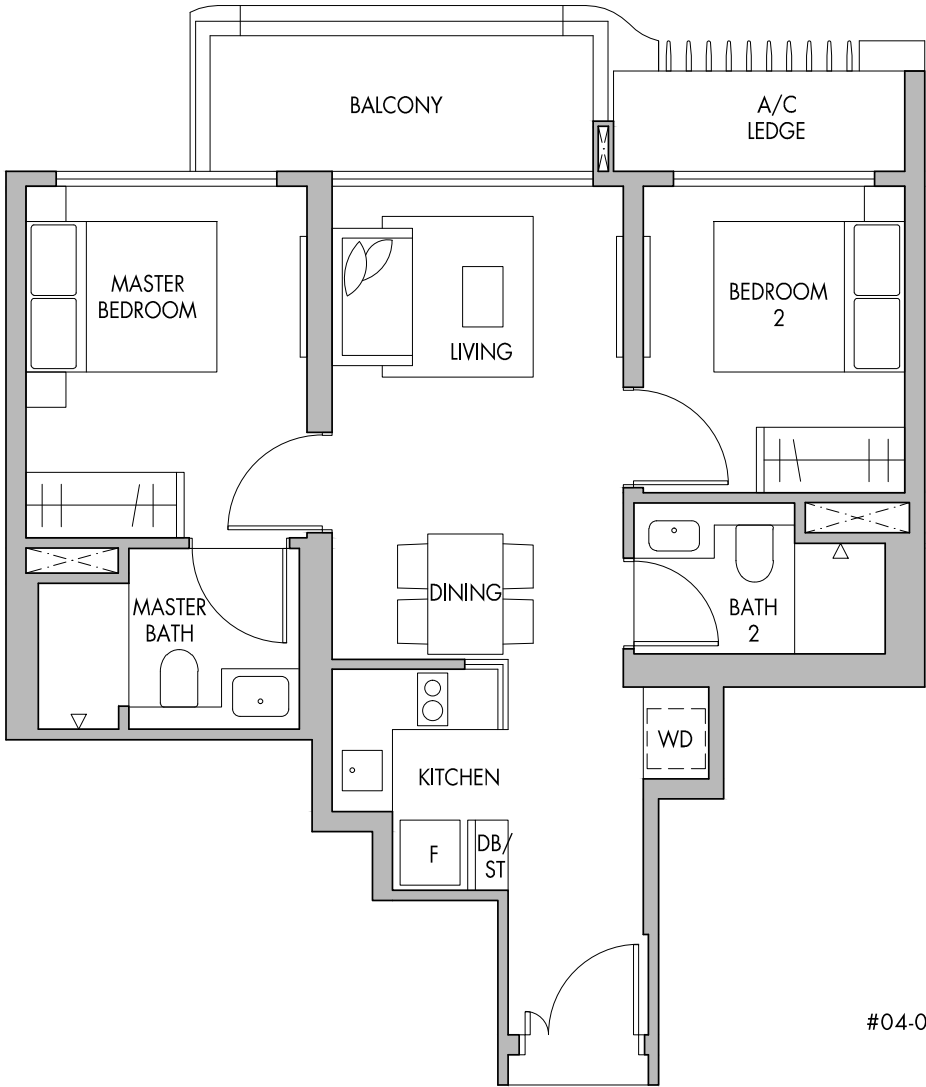
**Block 68**  
#03-36 (Mirrored)  
#04-36 to #20-36 (Mirrored)

64 sq.m. | 689 sq.ft.



Area includes A/C ledge, balconies and void (if applicable). The above plans and illustrations are subject to changes as may be required by the relevant authorities. Areas are estimates only and are subject to final survey. The balcony shall not be enclosed unless with the approved screen. For an illustration of the approved balcony screen, please refer to the diagram annexed hereto as 'Annexure 1'.

2-Bedroom Premium  
TYPE B6



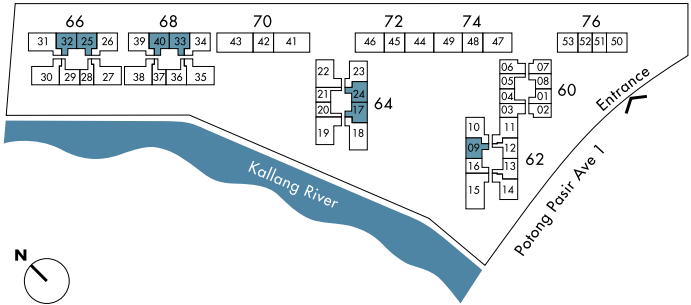
**Block 62**  
#04-09 to #19-09

**Block 64**  
#04-17 to #20-17  
(Mirrored) #04-24 to #07-24  
(Mirrored) #10-24 to #20-24

**Block 66**  
#04-25 to #07-25  
#10-25 to #20-25  
(Mirrored) #04-32 to #07-32  
(Mirrored) #10-32 to #20-32

**Block 68**  
#04-33 to #07-33  
#10-33 to #20-33  
(Mirrored) #04-40 to #07-40  
(Mirrored) #10-40 to #20-40

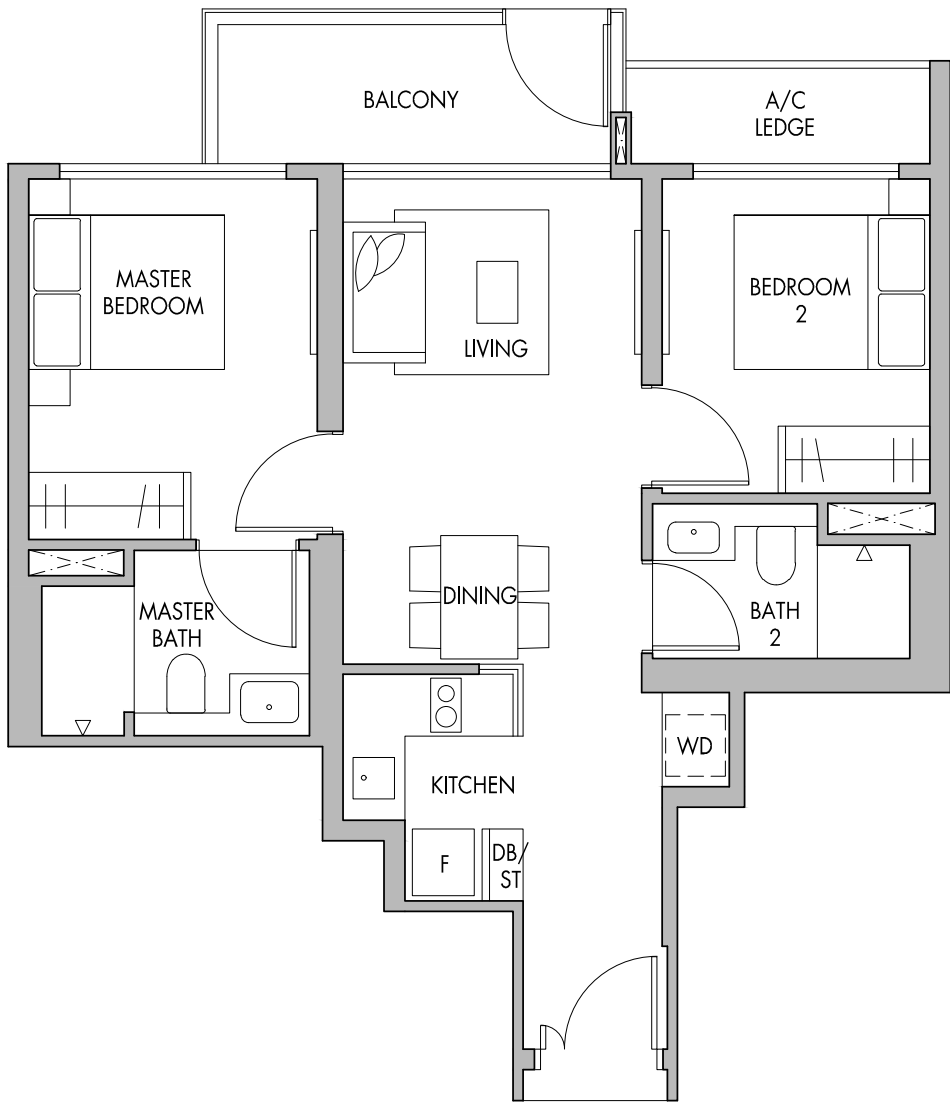
65 sq.m. | 700 sq.ft.



Area includes A/C ledge, balconies and void (if applicable). The above plans and illustrations are subject to changes as may be required by the relevant authorities. Areas are estimates only and are subject to final survey. The balcony shall not be enclosed unless with the approved screen. For an illustration of the approved balcony screen, please refer to the diagram annexed hereto as 'Annexure 1'.

2-Bedroom Premium  
TYPE B6P

2-Bedroom Premium  
TYPE B7

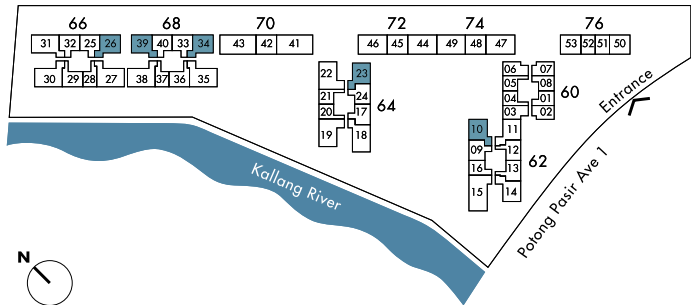
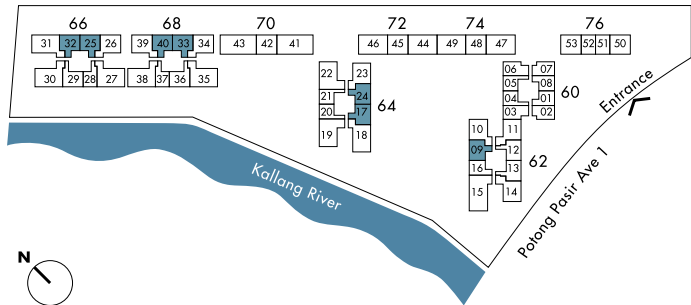


- Block 62**  
#03-09
- Block 64**  
#03-17  
#03-24 (Mirrored)
- Block 66**  
#03-25  
#03-32 (Mirrored)
- Block 68**  
#03-33  
#03-40 (Mirrored)

- Block 62**  
#04-10 to #19-10
- Block 64**  
(Mirrored) #04-23 to #07-23  
(Mirrored) #10-23  
(Mirrored) #11-23 to #20-23
- Block 66**  
#04-26 to #07-26  
#10-26  
#11-26 to #20-26
- Block 68**  
#04-34 to #07-34  
#10-34  
#11-34 to #20-34  
(Mirrored) #04-39 to #07-39  
(Mirrored) #10-39  
(Mirrored) #11-39 to #20-39

65 sq.m. | 700 sq.ft.

69 sq.m. | 743 sq.ft.



Area includes A/C ledge, balconies and void (if applicable). The above plans and illustrations are subject to changes as may be required by the relevant authorities. Areas are estimates only and are subject to final survey. The balcony shall not be enclosed unless with the approved screen. For an illustration of the approved balcony screen, please refer to the diagram annexed hereto as 'Annexure 1'.

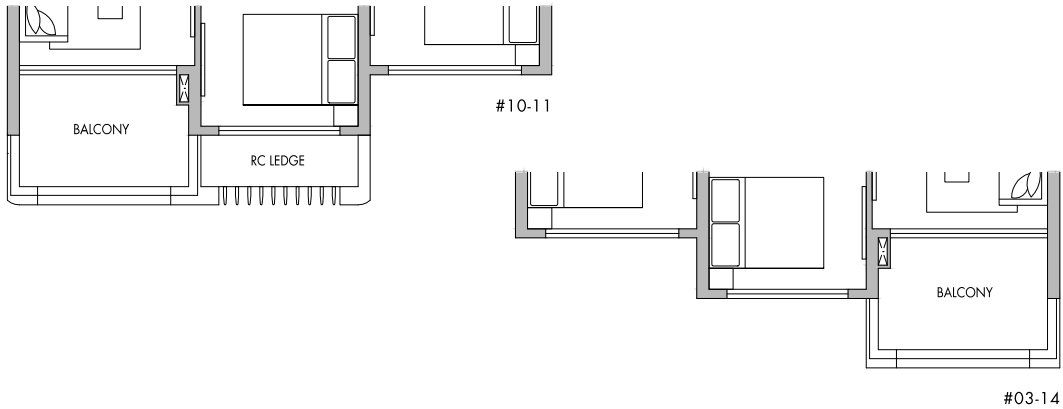
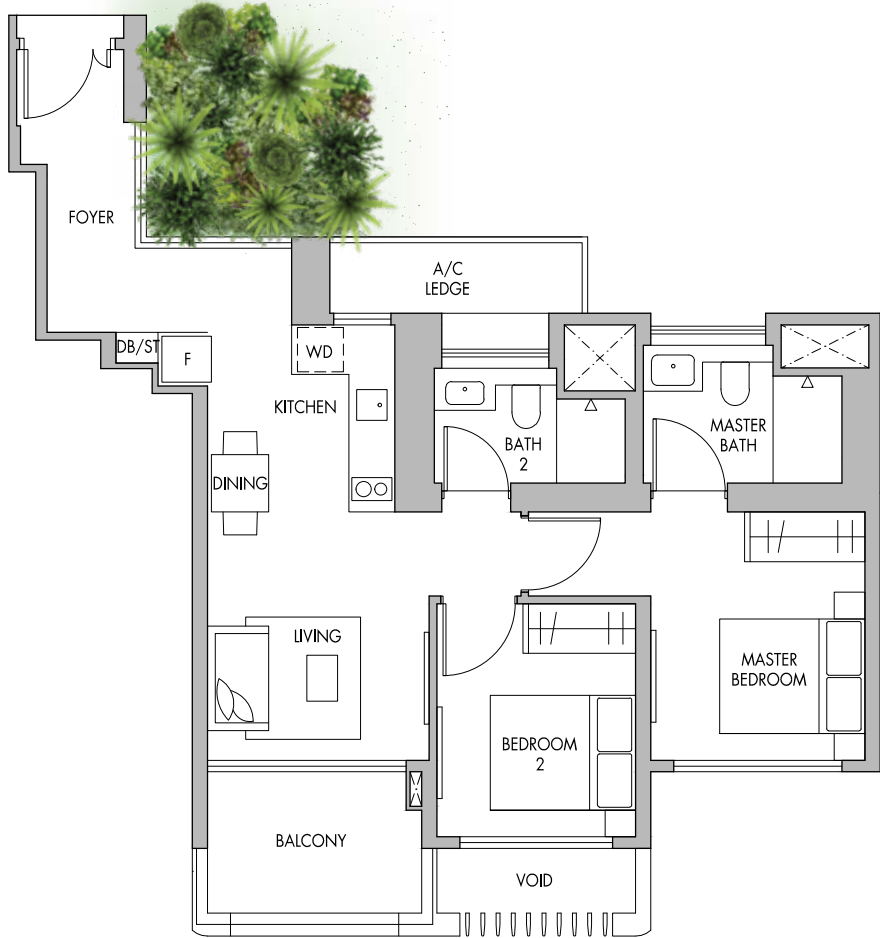
Area includes A/C ledge, balconies and void (if applicable). The above plans and illustrations are subject to changes as may be required by the relevant authorities. Areas are estimates only and are subject to final survey. The balcony shall not be enclosed unless with the approved screen. For an illustration of the approved balcony screen, please refer to the diagram annexed hereto as 'Annexure 1'.

# 2-Bedroom Premium

TYPE B7P

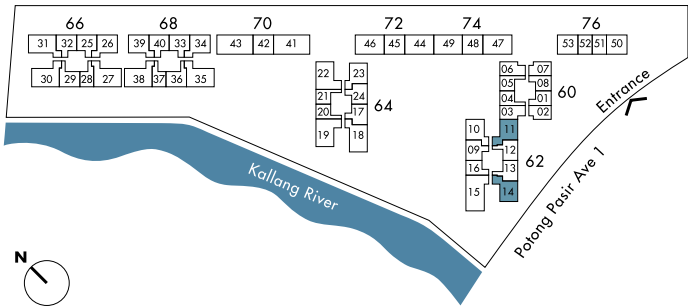
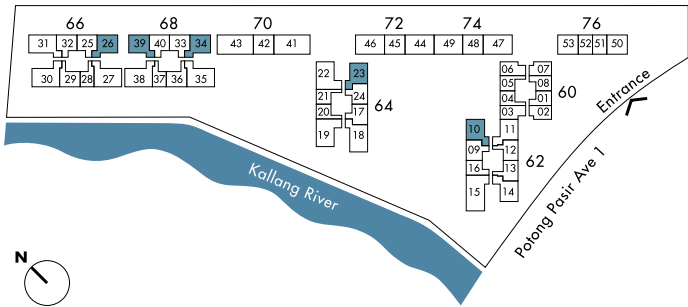
# 2-Bedroom Premium

TYPE B8



- Block 62  
#03-10
- Block 64  
#03-23 (Mirrored)
- Block 66  
#03-26
- Block 68  
#03-34  
#03-39 (Mirrored)

69 sq.m. | 743 sq.ft.



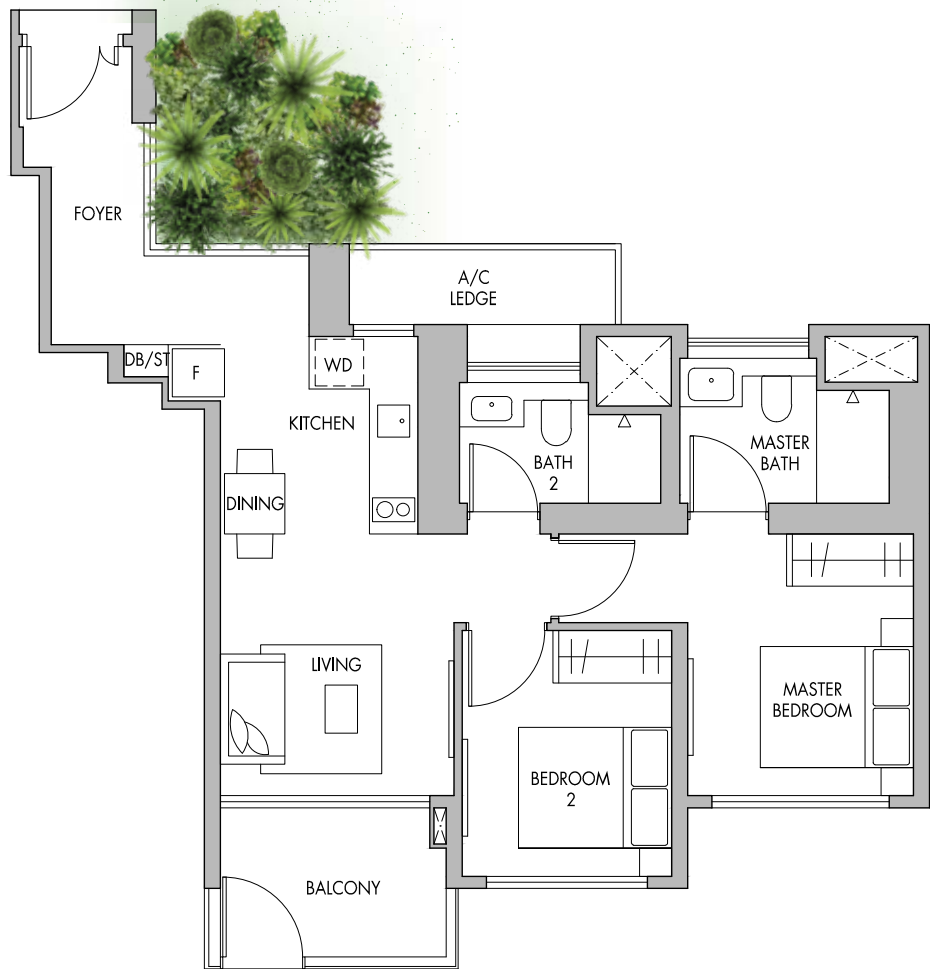
- Block 62  
#04-11 to #07-11  
#10-11  
#11-11 to #19-11  
(Mirrored) #03-14  
(Mirrored) #04-14 to #19-14

70 sq.m. | 753 sq.ft.

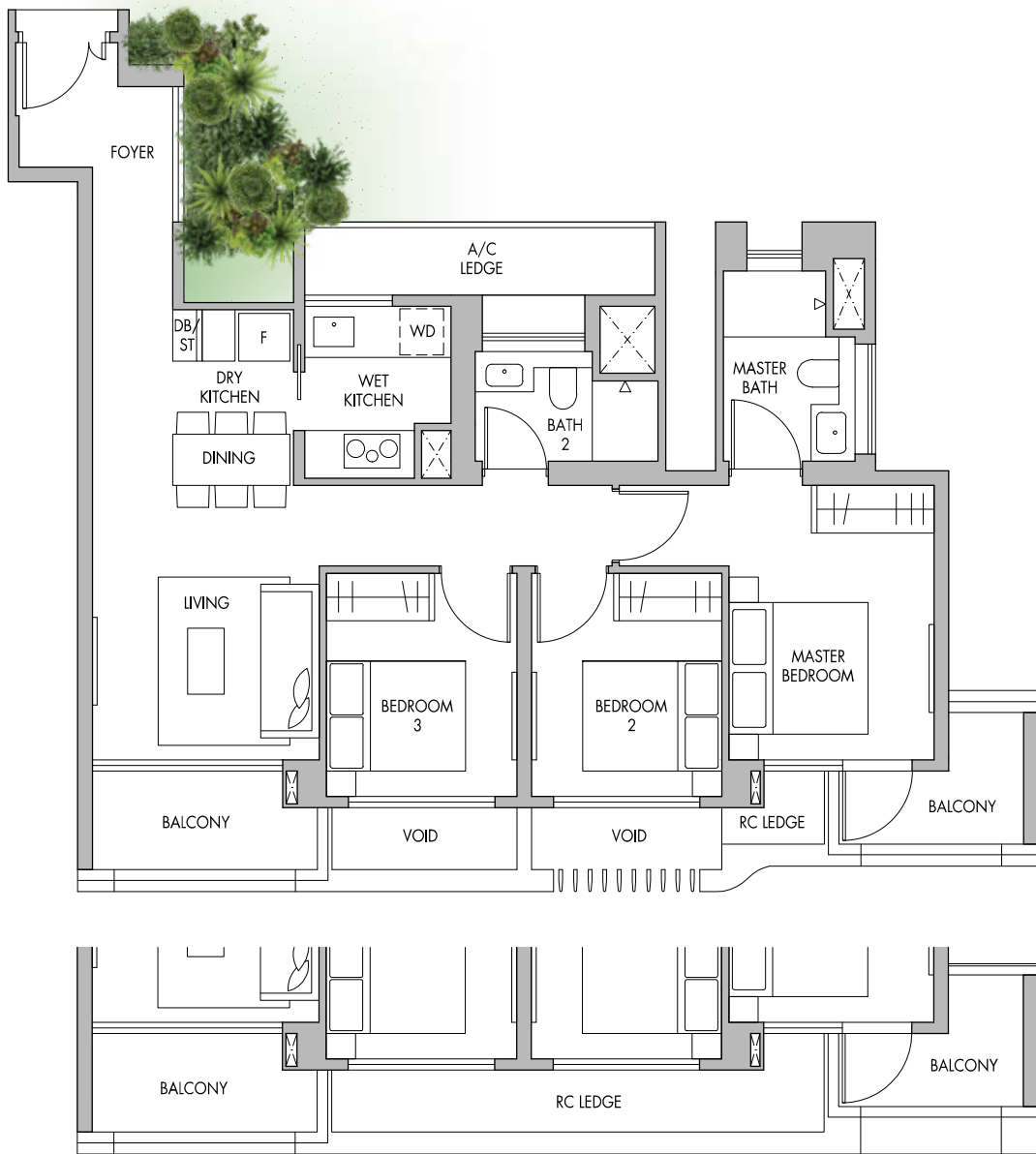
Area includes A/C ledge, balconies and void (if applicable). The above plans and illustrations are subject to changes as may be required by the relevant authorities. Areas are estimates only and are subject to final survey. The balcony shall not be enclosed unless with the approved screen. For an illustration of the approved balcony screen, please refer to the diagram annexed hereto as 'Annexure 1'.

Area includes A/C ledge, balconies and void (if applicable). The above plans and illustrations are subject to changes as may be required by the relevant authorities. Areas are estimates only and are subject to final survey. The balcony shall not be enclosed unless with the approved screen. For an illustration of the approved balcony screen, please refer to the diagram annexed hereto as 'Annexure 1'.

# 2-Bedroom Premium TYPE B8P



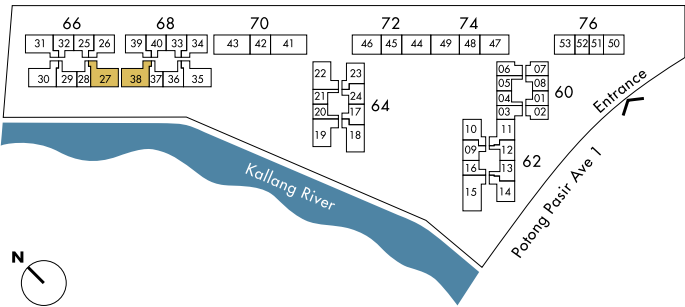
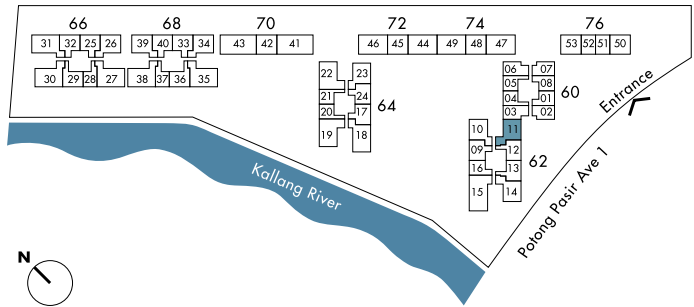
# 3-Bedroom TYPE C1



#03-27  
(Mirrored) #03-38

Block 62  
#03-11

70 sq.m. | 753 sq.ft.



Block 66  
#03-27  
#04-27 to #20-27  
  
Block 68  
(Mirrored) #03-38  
(Mirrored) #04-38 to #20-38

94 sq.m. | 1,012 sq.ft.

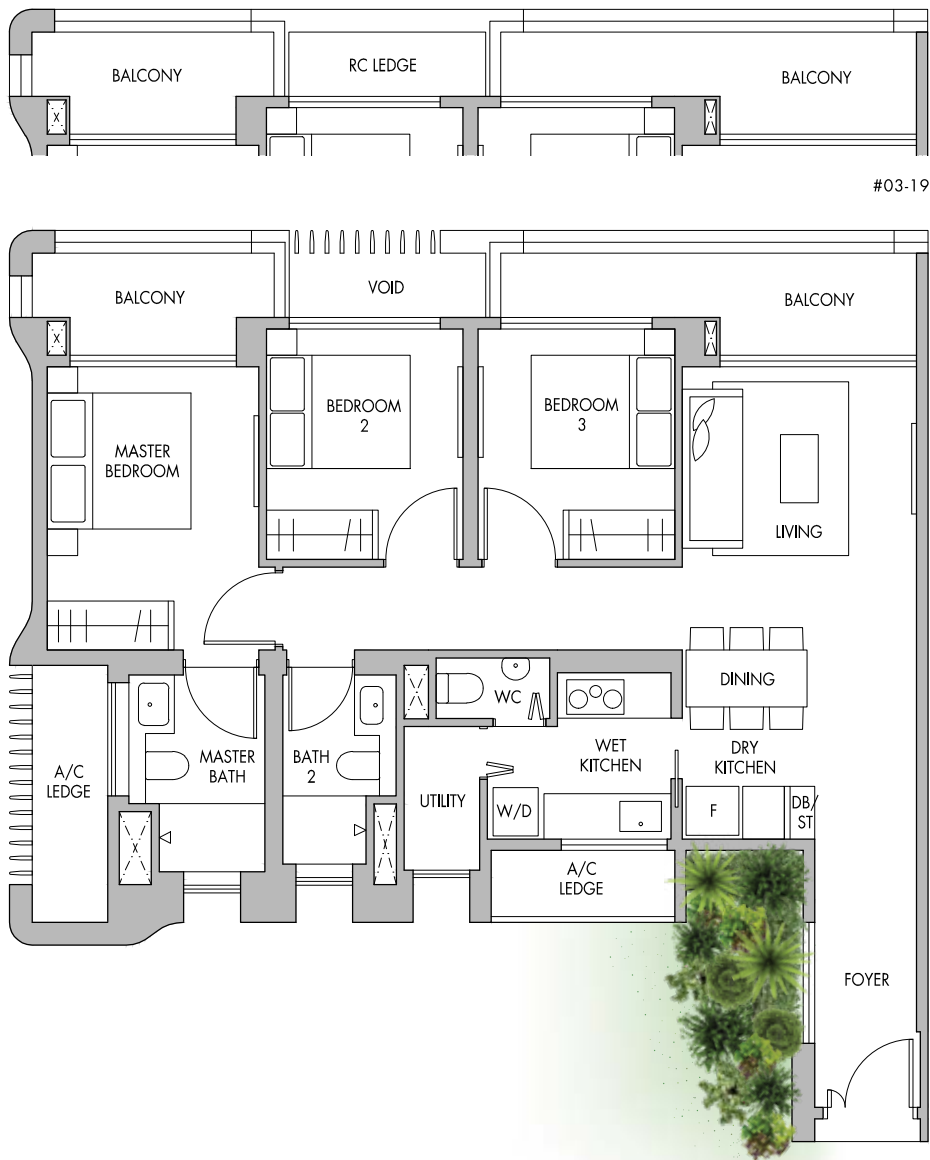
Area includes A/C ledge, balconies and void (if applicable). The above plans and illustrations are subject to changes as may be required by the relevant authorities. Areas are estimates only and are subject to final survey. The balcony shall not be enclosed unless with the approved screen. For an illustration of the approved balcony screen, please refer to the diagram annexed hereto as 'Annexure 1'.

Area includes A/C ledge, balconies and void (if applicable). The above plans and illustrations are subject to changes as may be required by the relevant authorities. Areas are estimates only and are subject to final survey. The balcony shall not be enclosed unless with the approved screen. For an illustration of the approved balcony screen, please refer to the diagram annexed hereto as 'Annexure 1'.

3-Bedroom Premium  
TYPE C3

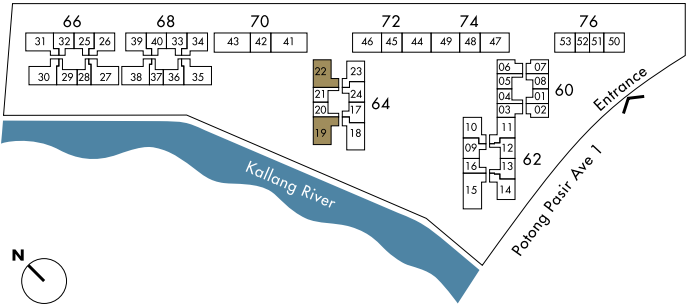
3-Bedroom Premium  
TYPE C3P

TOWER BLOCK



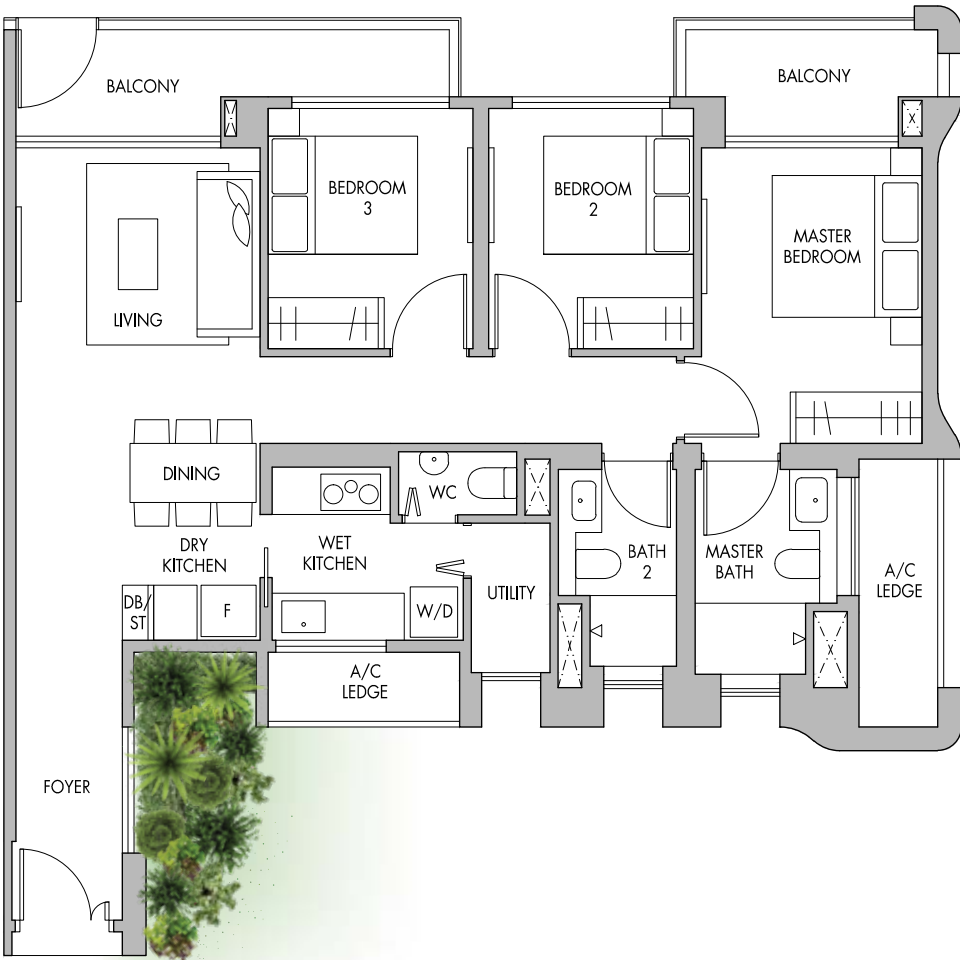
**Block 64**  
#03-19  
#04-19 to #20-19  
#04-22 to #20-22 (Mirrored)

102 sq.m. | 1,098 sq.ft.



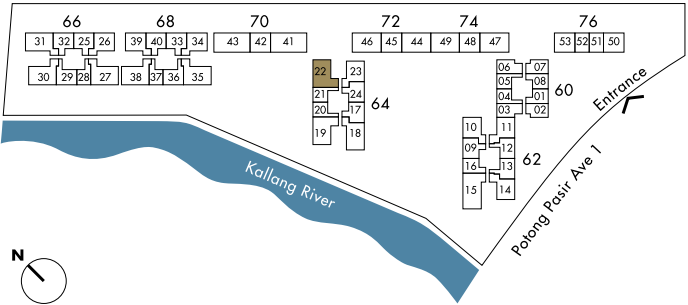
Area includes A/C ledge, balconies and void (if applicable). The above plans and illustrations are subject to changes as may be required by the relevant authorities. Areas are estimates only and are subject to final survey. The balcony shall not be enclosed unless with the approved screen. For an illustration of the approved balcony screen, please refer to the diagram annexed hereto as 'Annexure 1'.

TOWER BLOCK



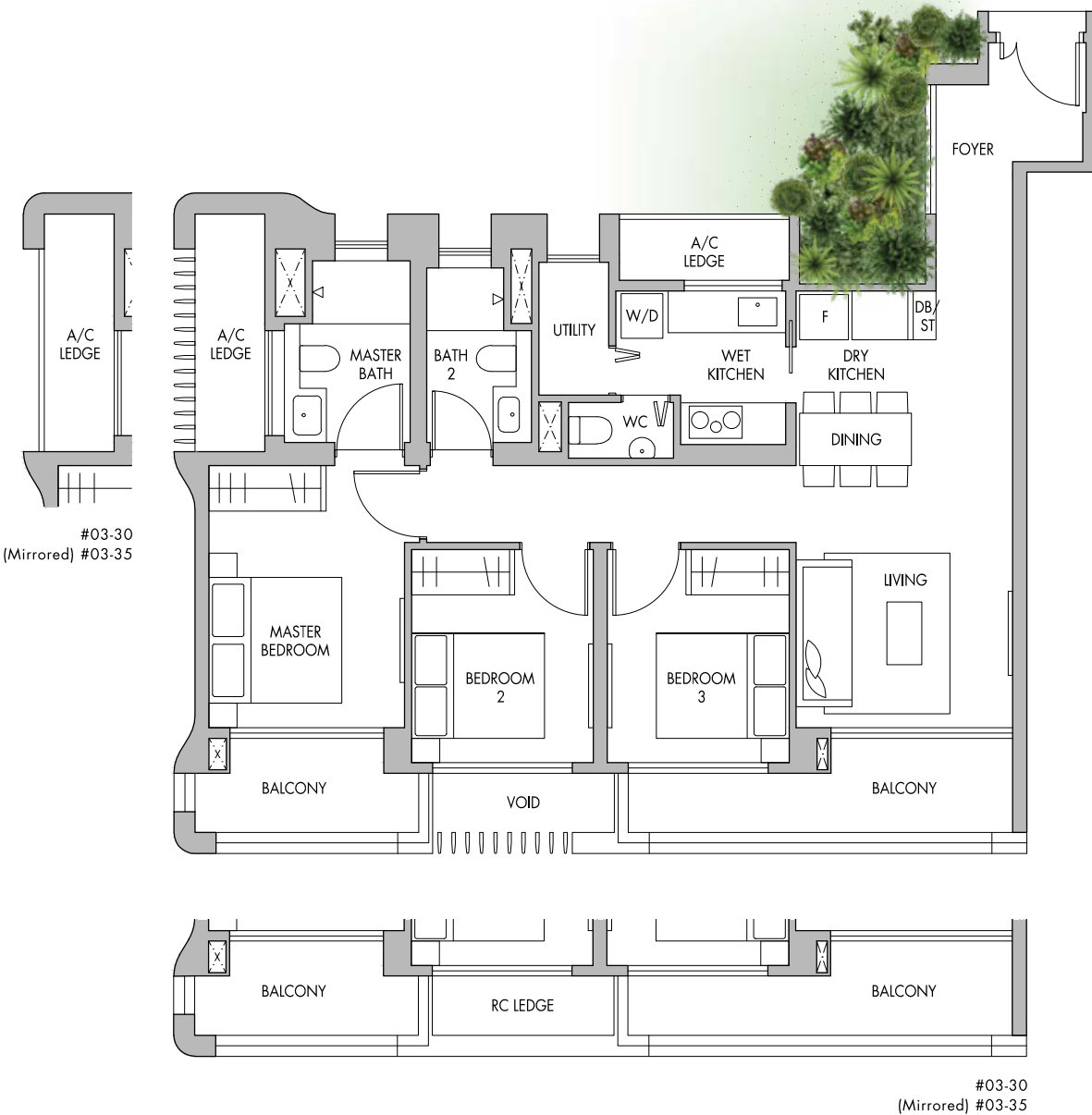
**Block 64**  
#03-22

102 sq.m. | 1,098 sq.ft.



Area includes A/C ledge, balconies and void (if applicable). The above plans and illustrations are subject to changes as may be required by the relevant authorities. Areas are estimates only and are subject to final survey. The balcony shall not be enclosed unless with the approved screen. For an illustration of the approved balcony screen, please refer to the diagram annexed hereto as 'Annexure 1'.

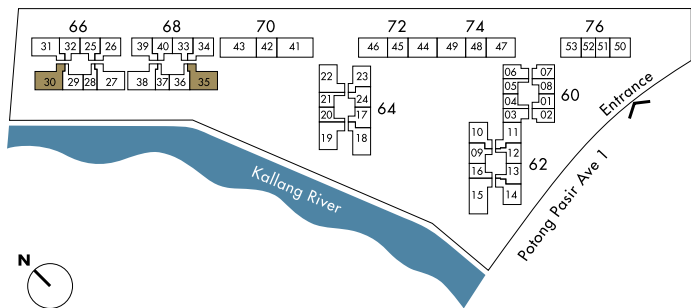
# 3-Bedroom Premium TYPE C4



**Block 66**  
#03-30  
#04-30 to #20-30

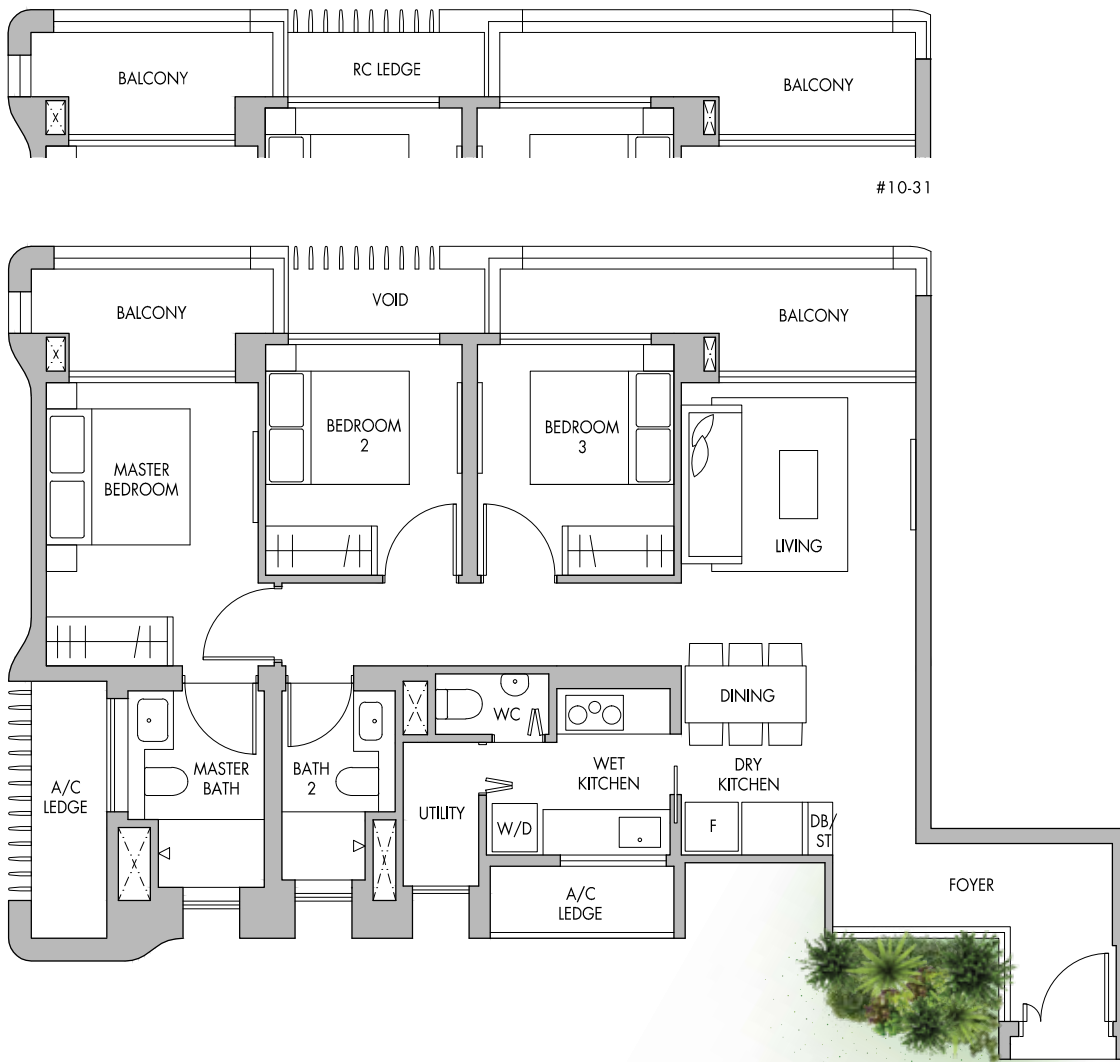
**Block 68**  
#03-35 (Mirrored)  
#04-35 to #20-35 (Mirrored)

102 sq.m. | 1,098 sq.ft.



Area includes A/C ledge, balconies and void (if applicable). The above plans and illustrations are subject to changes as may be required by the relevant authorities. Areas are estimates only and are subject to final survey. The balcony shall not be enclosed unless with the approved screen. For an illustration of the approved balcony screen, please refer to the diagram annexed hereto as 'Annexure 1'.

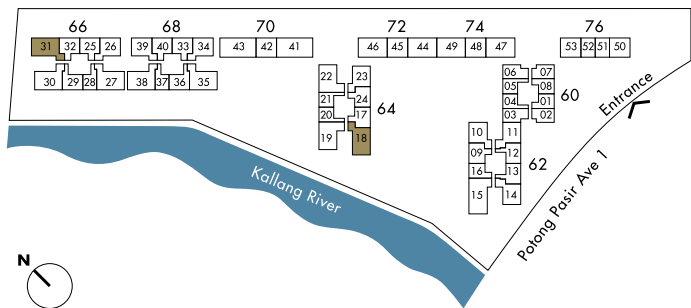
# 3-Bedroom Premium TYPE C5



**Block 64**  
(Mirrored) #04-18 to #20-18

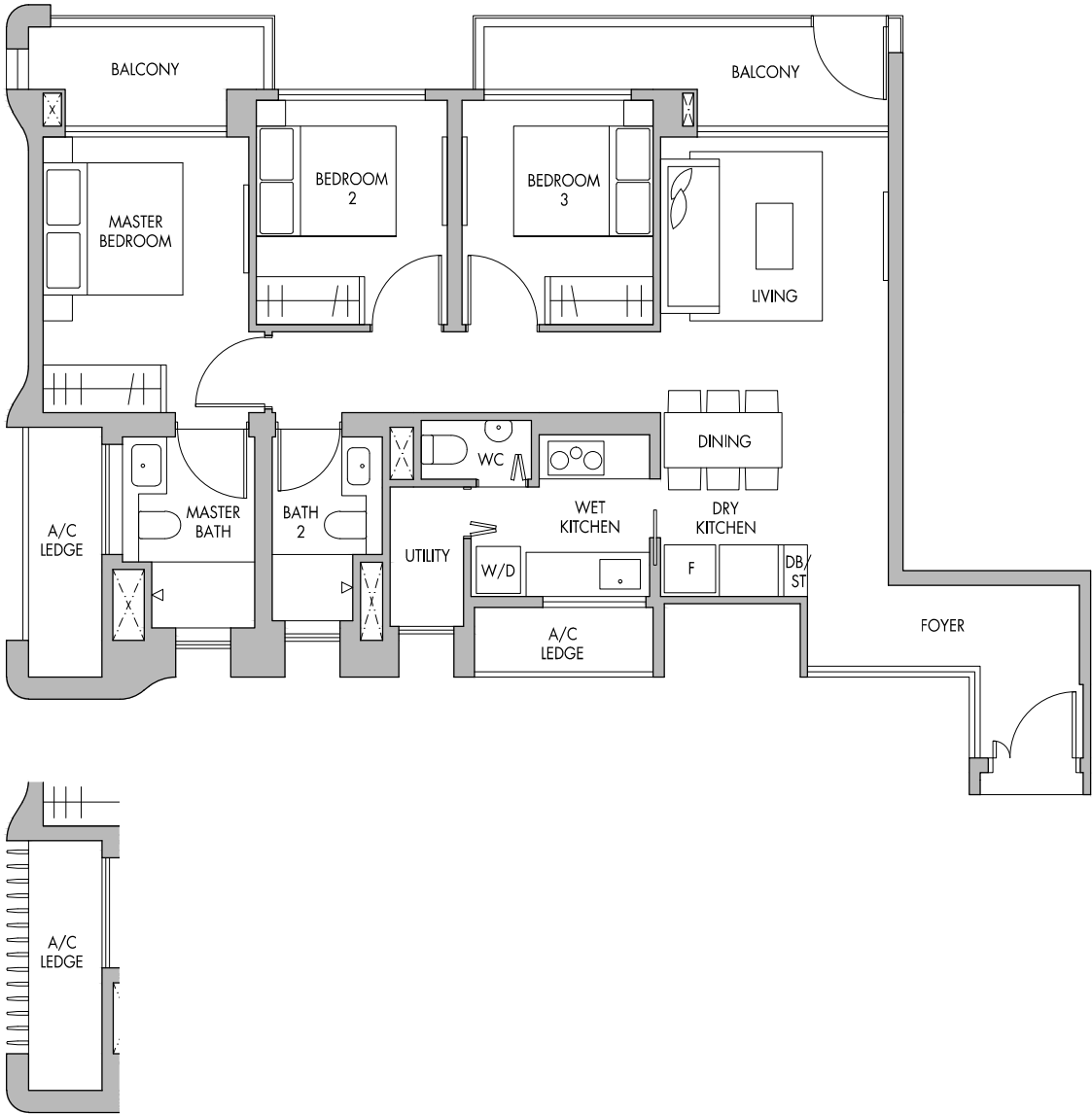
**Block 66**  
#04-31 to #07-31  
#10-31  
#11-31 to #20-31

103 sq.m. | 1,109 sq.ft.



Area includes A/C ledge, balconies and void (if applicable). The above plans and illustrations are subject to changes as may be required by the relevant authorities. Areas are estimates only and are subject to final survey. The balcony shall not be enclosed unless with the approved screen. For an illustration of the approved balcony screen, please refer to the diagram annexed hereto as 'Annexure 1'.

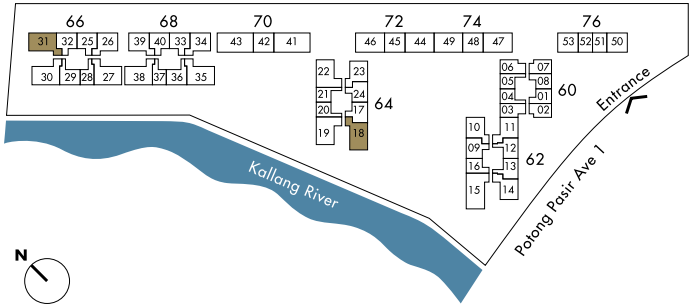
3-Bedroom Premium  
TYPE C5P



(Mirrored) #03-18

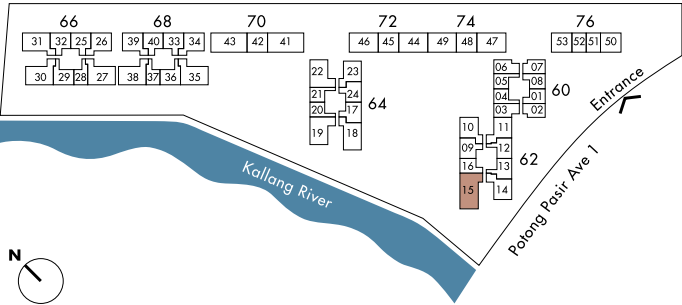
**Block 64**  
#03-18 (Mirrored)  
**Block 66**  
#03-31

103 sq.m. | 1,109 sq.ft.



Area includes A/C ledge, balconies and void (if applicable). The above plans and illustrations are subject to changes as may be required by the relevant authorities. Areas are estimates only and are subject to final survey. The balcony shall not be enclosed unless with the approved screen. For an illustration of the approved balcony screen, please refer to the diagram annexed hereto as 'Annexure 1'.

4-Bedroom  
TYPE D2

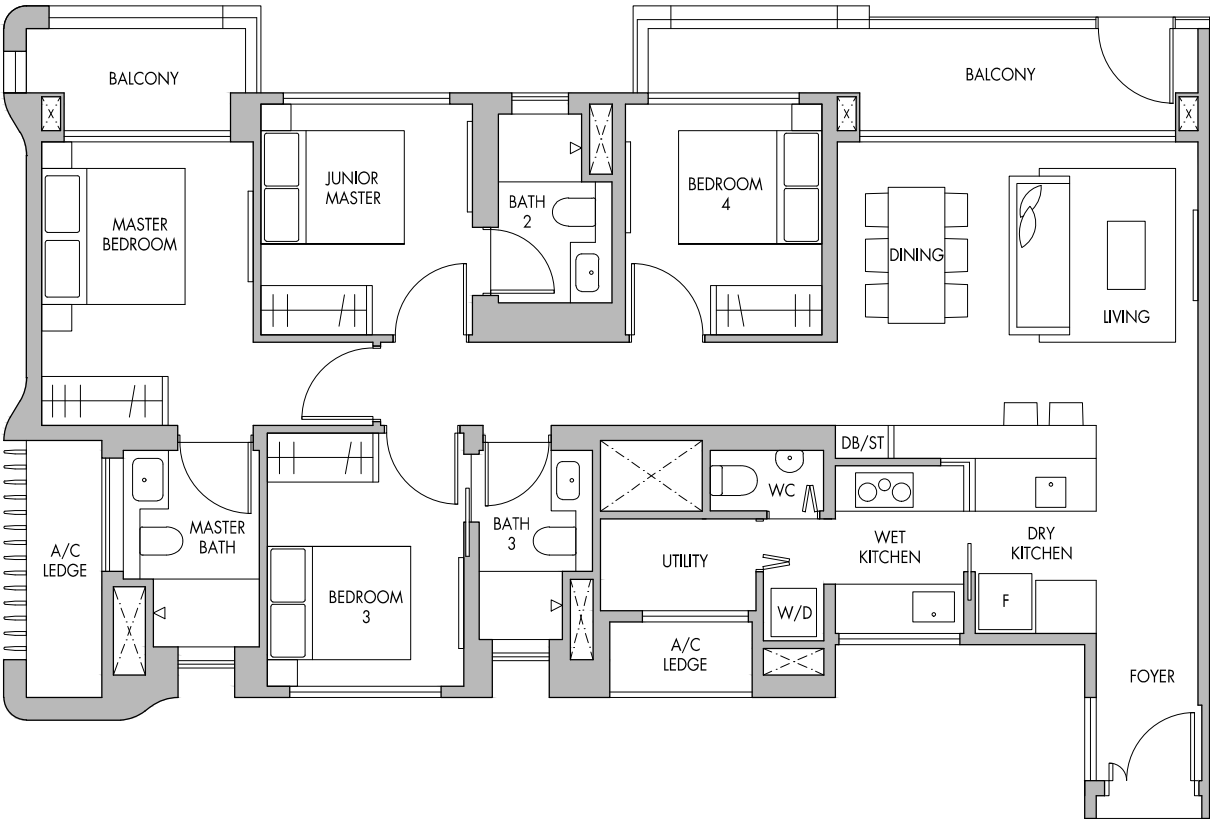


**Block 62**  
#04-15 to #19-15

128 sq.m. | 1,378 sq.ft.

Area includes A/C ledge, balconies and void (if applicable). The above plans and illustrations are subject to changes as may be required by the relevant authorities. Areas are estimates only and are subject to final survey. The balcony shall not be enclosed unless with the approved screen. For an illustration of the approved balcony screen, please refer to the diagram annexed hereto as 'Annexure 1'.

4-Bedroom  
TYPE D2P

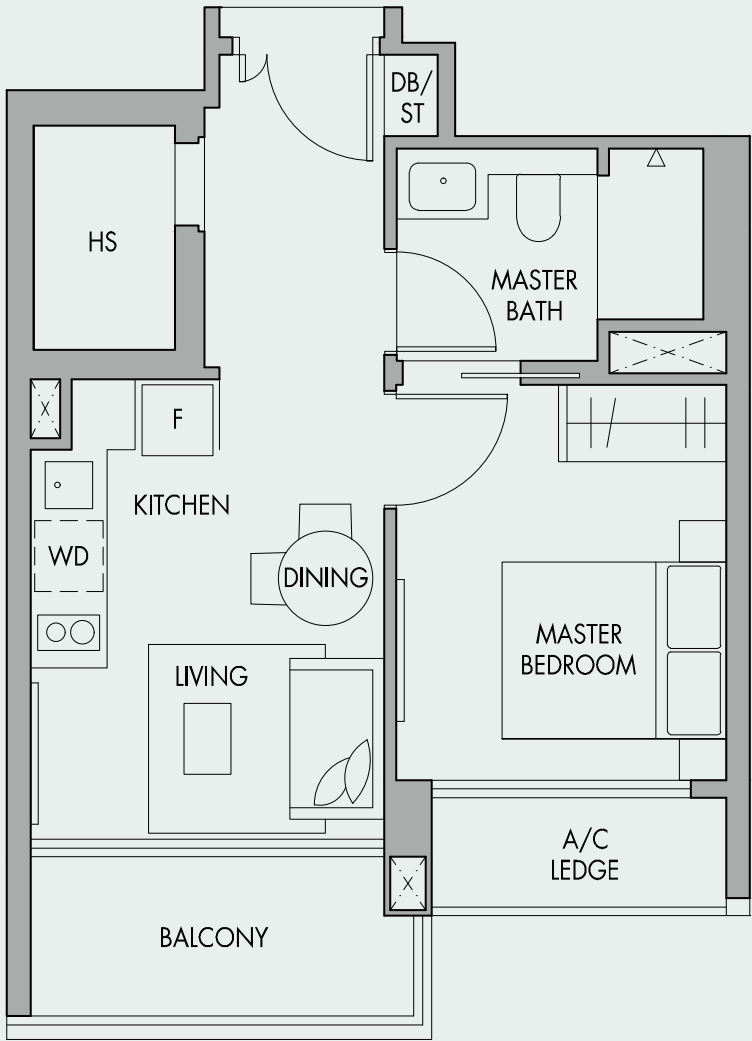


**Block 62**  
#03-15

128 sq.m. | 1,378 sq.ft.

Area includes A/C ledge, balconies and void (if applicable). The above plans and illustrations are subject to changes as may be required by the relevant authorities. Areas are estimates only and are subject to final survey. The balcony shall not be enclosed unless with the approved screen. For an illustration of the approved balcony screen, please refer to the diagram annexed hereto as 'Annexure 1'.

1-Bedroom  
TYPE A1

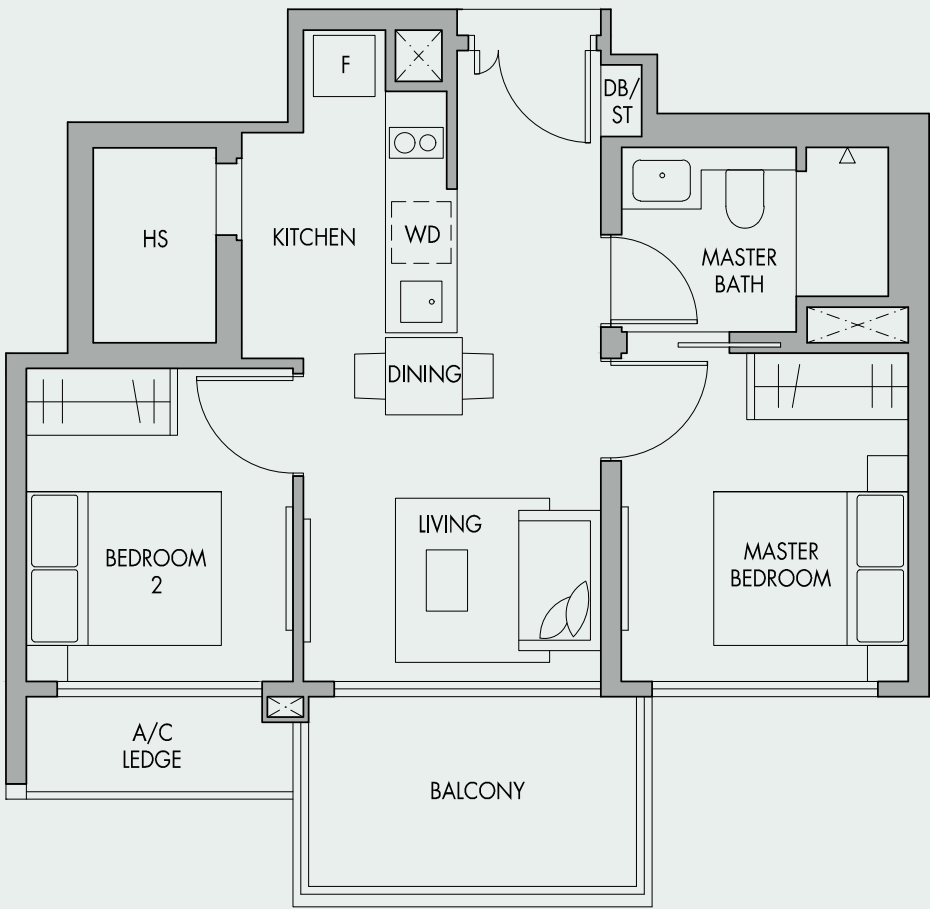


**Block 76**  
#04-51 to #07-51  
(Mirrored) #04-52 to #07-52

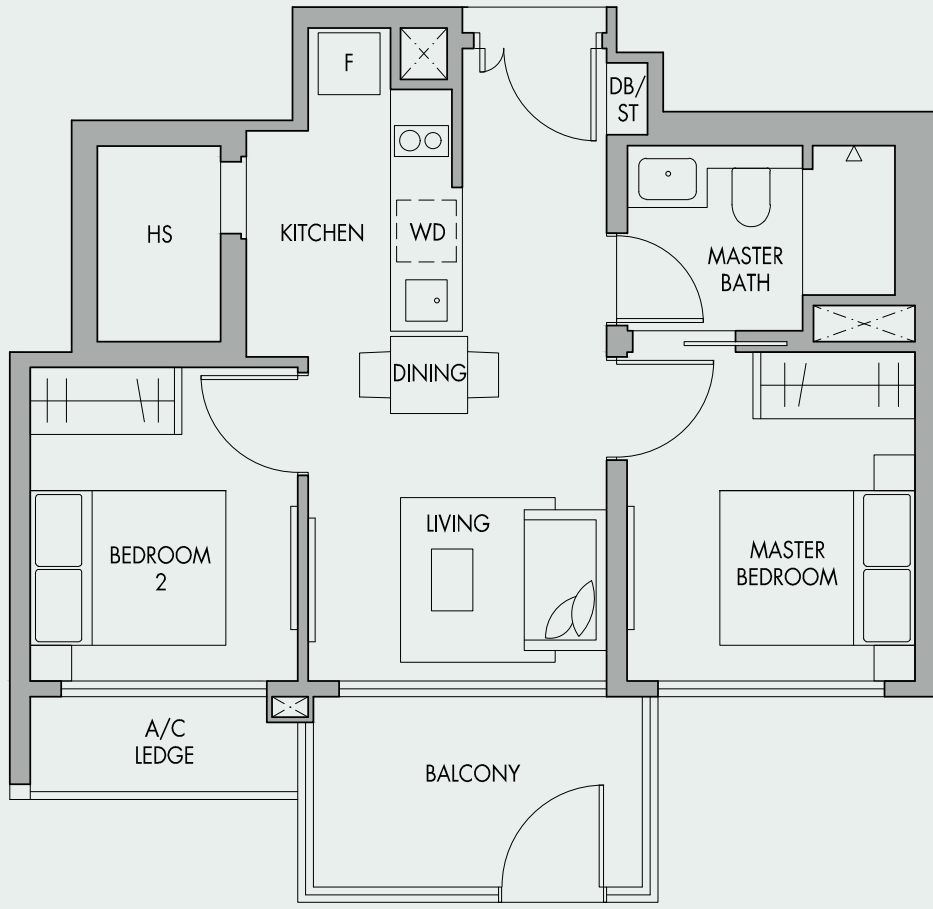
45 sq.m. | 484 sq.ft.

Area includes A/C ledge, balconies and void (if applicable). The above plans and illustrations are subject to changes as may be required by the relevant authorities. Areas are estimates only and are subject to final survey. The balcony shall not be enclosed unless with the approved screen. For an illustration of the approved balcony screen, please refer to the diagram annexed hereto as 'Annexure 1'.

2-Bedroom  
TYPE B4



2-Bedroom  
TYPE B4P

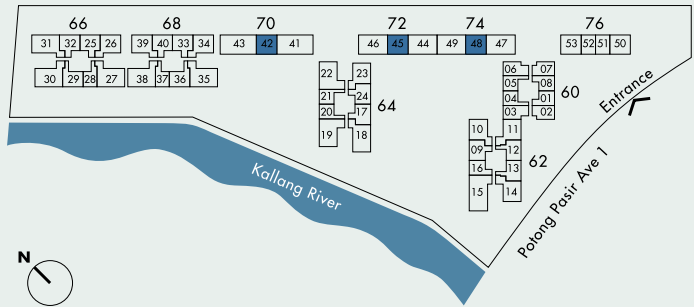


**Block 70**  
#04-42 to #07-42

**Block 72**  
#04-45 to #07-45

**Block 74**  
#04-48 to #07-48 (Mirrored)

59 sq.m. | 635 sq.ft.



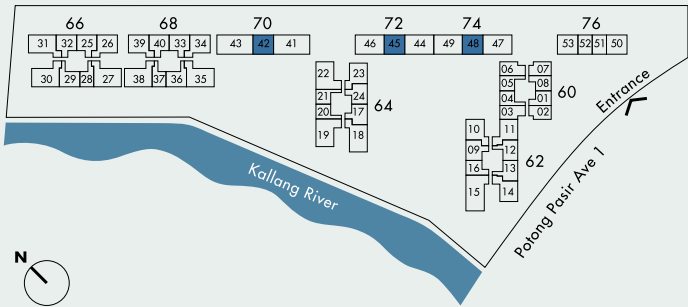
Area includes A/C ledge, balconies and void (if applicable). The above plans and illustrations are subject to changes as may be required by the relevant authorities. Areas are estimates only and are subject to final survey. The balcony shall not be enclosed unless with the approved screen. For an illustration of the approved balcony screen, please refer to the diagram annexed hereto as 'Annexure 1'.

**Block 70**  
#03-42

**Block 72**  
#03-45

**Block 74**  
(Mirrored) #03-48

59 sq.m. | 635 sq.ft.



Area includes A/C ledge, balconies and void (if applicable). The above plans and illustrations are subject to changes as may be required by the relevant authorities. Areas are estimates only and are subject to final survey. The balcony shall not be enclosed unless with the approved screen. For an illustration of the approved balcony screen, please refer to the diagram annexed hereto as 'Annexure 1'.

## TYPE B9



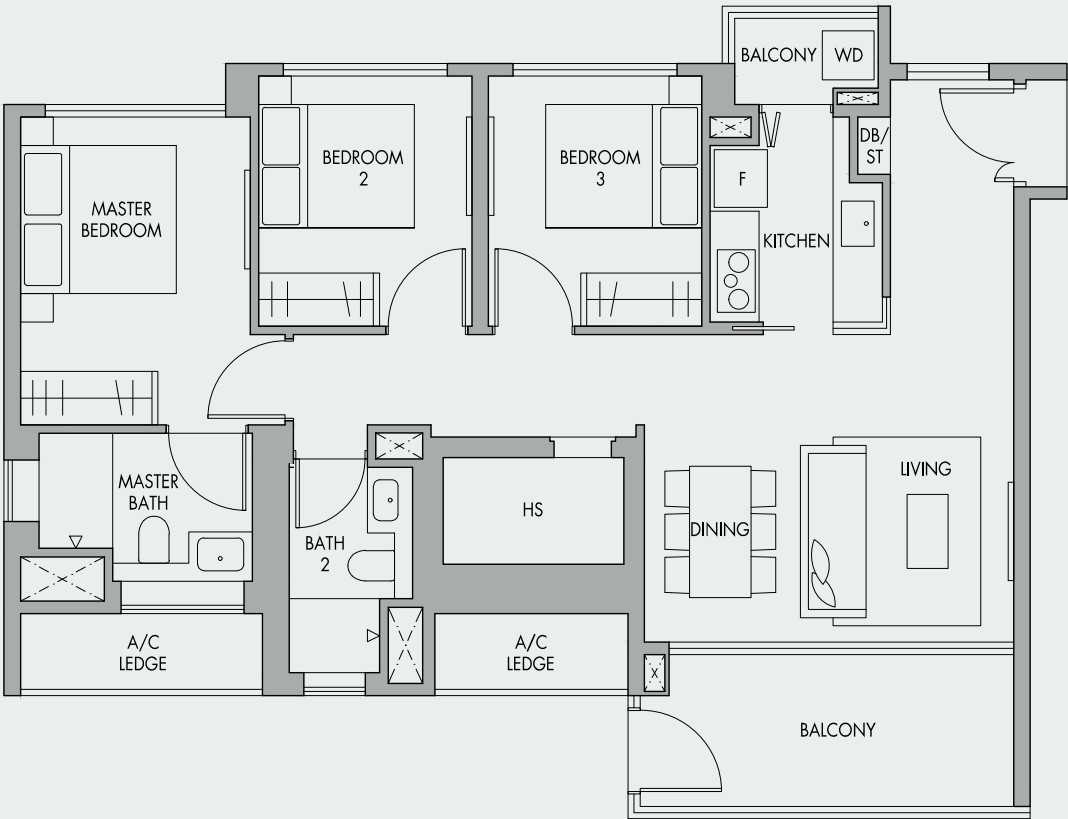
## TYPE C2



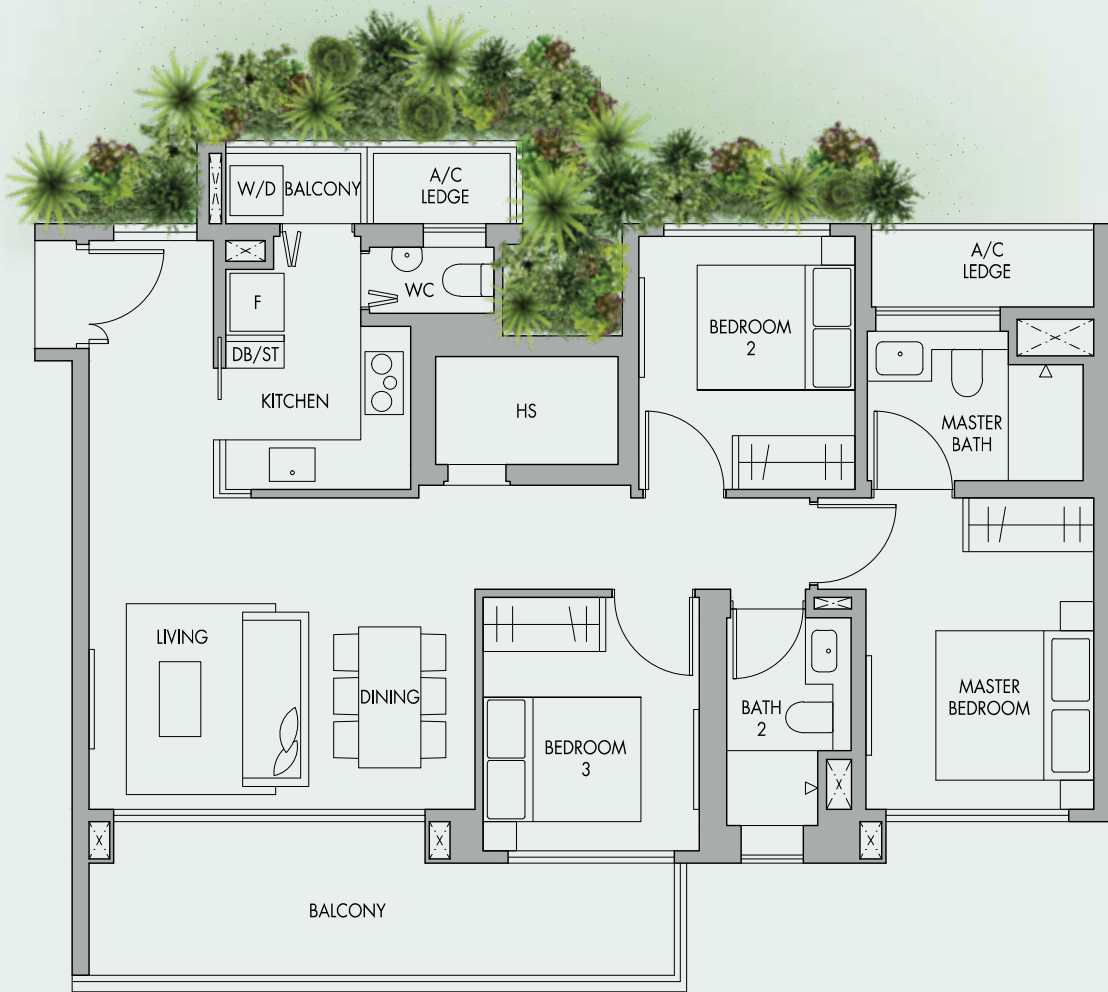
66



# 3-Bedroom Premium TYPE C2P

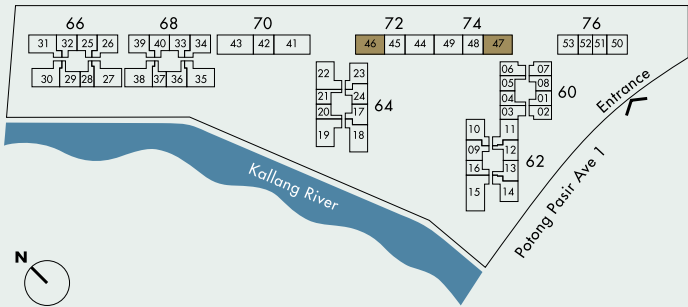


# 3-Bedroom Premium TYPE C6



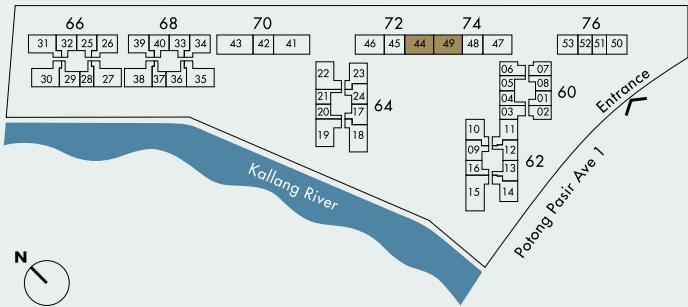
**Block 72**  
#03-46  
  
**Block 74**  
#03-47 (Mirrored)

98 sq.m. | 1,055 sq.ft.



**Block 72**  
#04-44 to #07-44  
  
**Block 74**  
(Mirrored) #04-49 to #07-49

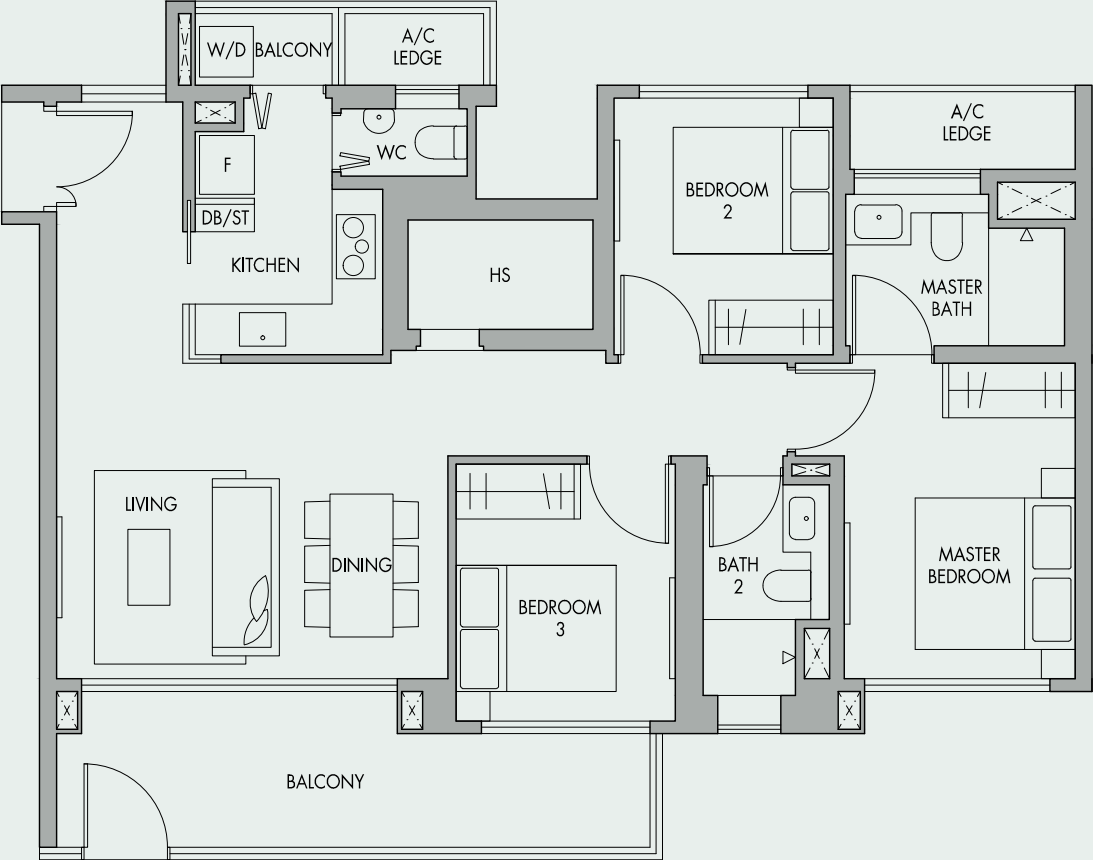
102 sq.m. | 1,098 sq.ft.



Area includes A/C ledge, balconies and void (if applicable). The above plans and illustrations are subject to changes as may be required by the relevant authorities. Areas are estimates only and are subject to final survey. The balcony shall not be enclosed unless with the approved screen. For an illustration of the approved balcony screen, please refer to the diagram annexed hereto as 'Annexure 1'.

Area includes A/C ledge, balconies and void (if applicable). The above plans and illustrations are subject to changes as may be required by the relevant authorities. Areas are estimates only and are subject to final survey. The balcony shall not be enclosed unless with the approved screen. For an illustration of the approved balcony screen, please refer to the diagram annexed hereto as 'Annexure 1'.

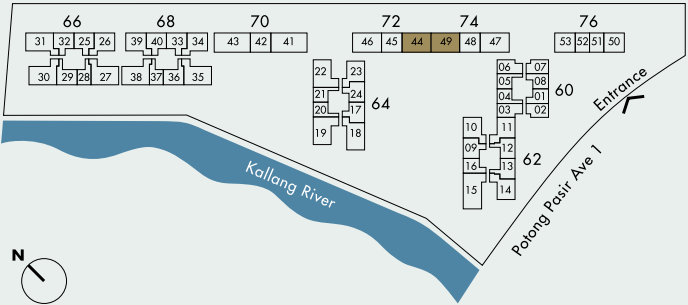
3-Bedroom Premium  
TYPE C6P



**Block 72**  
#03-44

**Block 74**  
#03-49 (Mirrored)

102 sq.m. | 1,098 sq.ft.



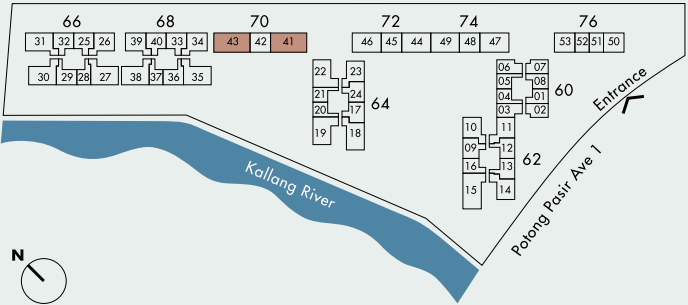
Area includes A/C ledge, balconies and void (if applicable). The above plans and illustrations are subject to changes as may be required by the relevant authorities. Areas are estimates only and are subject to final survey. The balcony shall not be enclosed unless with the approved screen. For an illustration of the approved balcony screen, please refer to the diagram annexed hereto as 'Annexure 1'.

4-Bedroom Premium  
TYPE D1



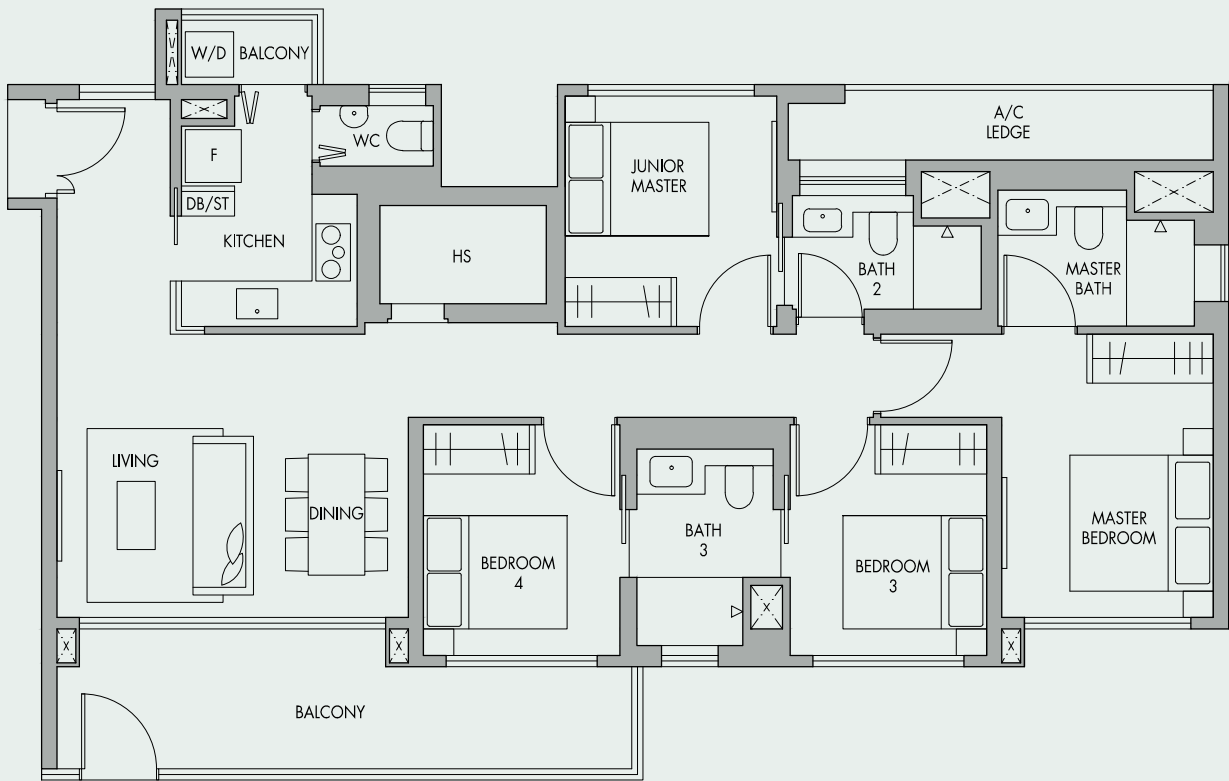
**Block 70**  
#04-41 to #07-41  
(Mirrored) #04-43 to #07-43

124 sq.m. | 1,335 sq.ft.



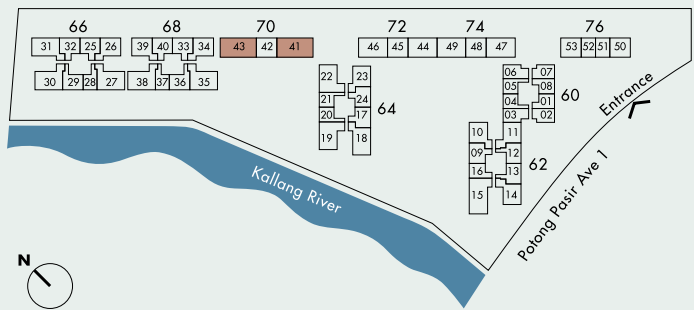
Area includes A/C ledge, balconies and void (if applicable). The above plans and illustrations are subject to changes as may be required by the relevant authorities. Areas are estimates only and are subject to final survey. The balcony shall not be enclosed unless with the approved screen. For an illustration of the approved balcony screen, please refer to the diagram annexed hereto as 'Annexure 1'.

4-Bedroom  
TYPE D1P



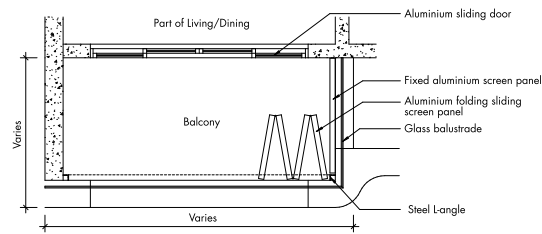
Block 70  
#03-41  
#03-43 (Mirrored)

124 sq.m. | 1,335 sq.ft.

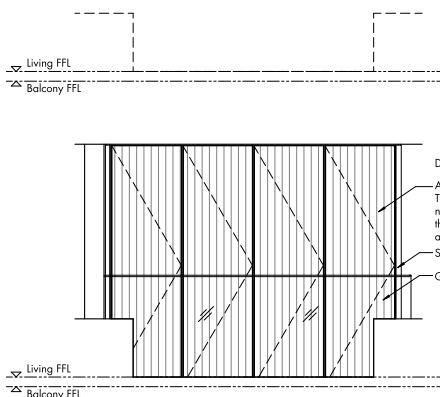


Area includes A/C ledge, balconies and void (if applicable). The above plans and illustrations are subject to changes as may be required by the relevant authorities. Areas are estimates only and are subject to final survey. The balcony shall not be enclosed unless with the approved screen. For an illustration of the approved balcony screen, please refer to the diagram annexed hereto as 'Annexure 1'.

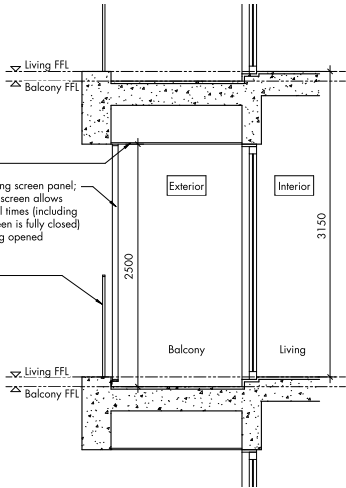
Annexure 1



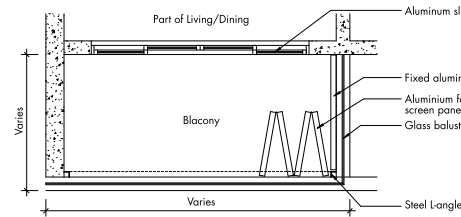
Tower Block  
Typical Retractable Balcony Screen - Plan



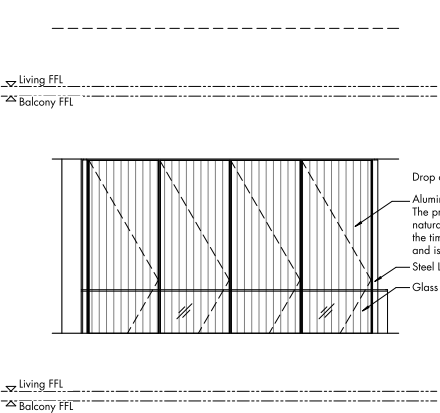
Tower Block  
Typical Retractable Balcony Screen - Elevation



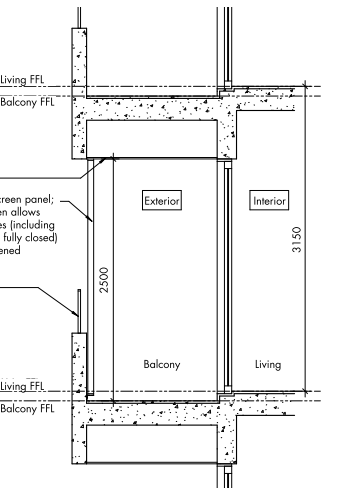
Tower Block  
Typical Retractable Balcony Screen - Section



Garden Block  
Typical Retractable Balcony Screen - Plan



Garden Block  
Typical Retractable Balcony Screen - Elevation



Garden Block  
Typical Retractable Balcony Screen - Section

Note: The cost of the screen and installation shall be borne by the Purchaser. Actual profile of the screen is subjected to manufacturer's detail. The proposed balcony screen allows natural ventilation at all times (including the times when the screen is fully closed).